



Xenox M80

Mobile x-ray system





Xenox M80

Mobile x-ray system

Xenox M80 is an analog mobile x-ray unit designed for radiological examinations at the patient's bed and in the Emergency Room.

M80 can be equipped with generator power from 15 kW to 30 kW and Xray tube with 3000 rpm rotating anode or 10000 rpm as High speed version.



FEATURES

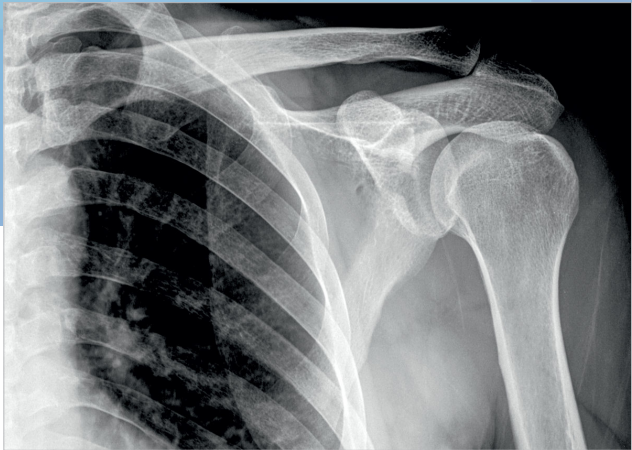
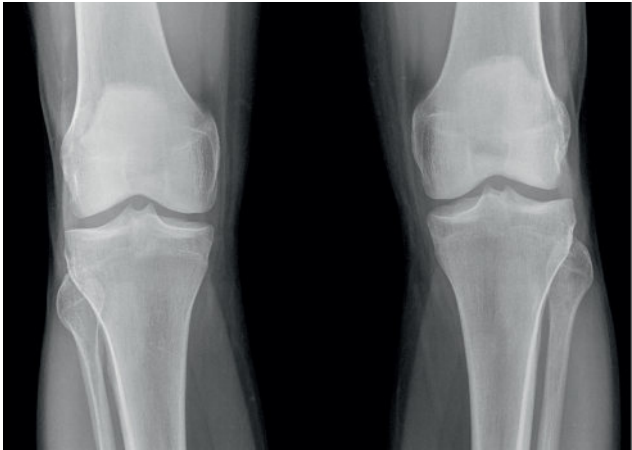
- Protection and automatic control of filament current
- Protection from over current and over voltage (kv, ma)
- Protection from maximum load of x-ray tube
- Operator error or malfunctioning indication
- Swivelling front wheels in anti-static rubber
- Dead-man brake system
- Container for 6 x-ray cassettes
- Variable focus-floor distance 47-204cm
- Rotation of monoblock supporting fork $\pm 180^\circ$
- Rotation of monoblock in fork $0^\circ / +90^\circ$

OUTSTANDING

- The limited weight of the Xenox M80 unit makes the equipment easy to handle and move
- The equipment can easily overcome small obstacles, such as the difference in level between the bottom of the elevator and the hallway
- The „dead man” brake system, instead of the usual foot brake, is a passive safety device that is engaged if the device is accidentally released during downhill transportation
- Thanks to its limited overall dimensions the operator has good visibility during transportation
- The operator can easily position the equipment using the appropriate handle
- Thanks to the particular movement of the supporting arm and of the radiogenic source fork, the operator can easily centre the X-rays
- The radiogenic source is very easy to use even at floor level
- The control desk is controlled by a microprocessor with digital display of the radiological parameters
- It allows for an easy and rapid interpretation and selection of the examination parameters through the TFT touch screen
- The control software developed in windows environment can be updated using a standard pc with serial port
- The arm has an articulated joint with four-bar linkage system, balanced independently
- The function of the arm group is to support the radiogenic source hanging over the operating space and keep it at right angle with the examination surface
- The arm articulation fulcrum is fitted with a clutch system to keep the extension of the arm in the desired position and to position the machine quickly, in as less manoeuvres as possible to speed up the examination
- The winning design and the colours have been chosen to limit the emotional impact on the patient taking into account the ergonomic features linked with the practical use of the unit



EXCELLENT CLINICAL IMAGES



TECHNICAL SPECIFICATIONS

Xenox M80 | SternMed mobile x-ray system

Power Supply	Standard: Voltage 230V ± 10%, 50/60Hz, 16A max. Optional: 110V			
X-RAY GENERATOR	15	15HS	30	30HS
High frequency generator type	monoblock			
Max power	15kW (95kV-160mA-0.125s)	15kW (95kV-160mA-0.125s)	30kW (100kV-320mA-0.1s)	30kW (100kV-320mA-0.1s)
Max voltage	125kV			
Max current	200mA	200mA	400mA	400mA
Max mAs	250mAs	250mAs	320mAs	320mAs
mAs Selection	27 values from 0.1 to 250mAs	27 values from 0.5 to 250mAs	<ul style="list-style-type: none"> • 27 values from 0.5 to 250mAs (110V line) • 28 values 	<ul style="list-style-type: none"> from 0.5 to 320mAs 28 values from 0.5 to 320mAs
kV selection	continuously from 40 to 125kV			
mA selection	in 10 values from 25 to 200mA	in 10 values from 25 to 200mA	in 10 values from 50 to 400mA	in 10 values from 50 to 400mA
Selection of exposure times	<ul style="list-style-type: none"> • in 32 values from 0.003 to 6.3s • in 33 values from 0.001 to 6.3s (upon request) 			
Safety devices and guards	<ul style="list-style-type: none"> • protection and automatic control of filament current • protection from over current and over voltage • protection from maximum load of X-ray tube • operator error or malfunctioning indication 			
Ripple frequency	40kHz			
Ripple	1%			
Monoblock thermal capacity	825kJ-1103kJ			
X-RAY TUBE				
Anode rotating speed	3000 rpm	10000 rpm	3000 rpm	10000 rpm
focal spot	0.6-1.3mm	0.3-0.6mm	0.6-1.3mm	0.3x0.8mm
Anode material	RTM	RTM RTM	RT-TZM	
Anode angle	15°			
Thermal capacity	80kJ-107kJ			
Continuous anode thermal dissipation	Max 300W			
Automatic breaking anode	no	yes	no	yes
CONTROL DESK				
Type	10.4" touch screen display			
OPERATING MODALITIES				
Techniques	<ul style="list-style-type: none"> • 2-points (kV,mAs) • 3-points (kV,mAs,time) 			
Programmed anatomical parts	198			
Part sizes	6 different			
Additional functions	<ul style="list-style-type: none"> • collimator lamp ON/OFF switch also from the touch panel • possibility to switch potter Bucky ON/OFF • X-ray button with double release with extension cable up to 4 meters 			

TECHNICAL SPECIFICATIONS

Xenox M80 | SternMed mobile x-ray system

COLLIMATOR

Type	multiple layer blades with manual control
Collimation area	variable field from 0x0 to 43x43cm at 100 cm DFF
Lamps	high intensity halogen lamp 160lux at 100cm ON/OFF timer of lamp at 30s
Collimator rotation	$\pm 90^\circ$
Other features	extractible measurement tape to control DFF

MECHANICAL

Wheels	swivelling front wheels in anti-static rubber
Brake system	dead-Man
Cassette holder	for 6 X-ray cassette 35x43cm
Focus-floor distance	46,5-200cm
Rotation of monoblock supporting fork	$\pm 180^\circ$
Rotation of monoblock in fork	$0^\circ \div +90^\circ$
Dimensions during transportation	117x71x153h cm
Weight	150kg

ACCESSORIES UPON REQUEST

Possibility of connection to a D.A.P. (kerma measurement system for area) with relative thermal printer. The DAP value is visualized on the 10.4" display



STERNMED[®]

