



STERNMED[®]



Xenox M70

Mobile x-ray system



www.sternmed.de

STERNMED[®]



Xenox M70 mobile x-ray system

The Xenox M70 is a light weight and small analog mobile x-ray unit designed for radiological examinations at the patient's bed and in the Emergency Room.

The device is equipped with 4kW generator, stationary anode and digital display to control radiological parameters.



FEATURES

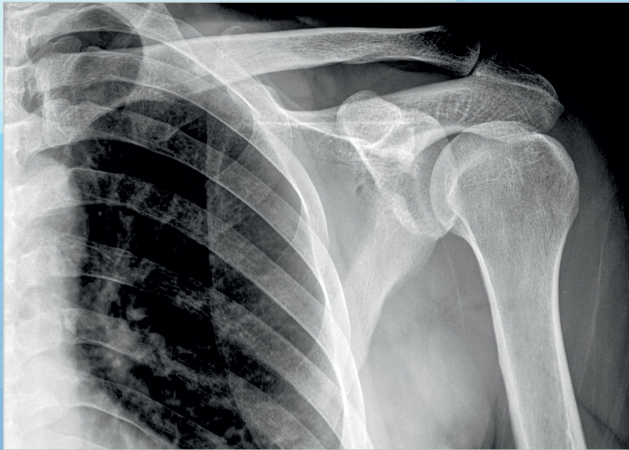
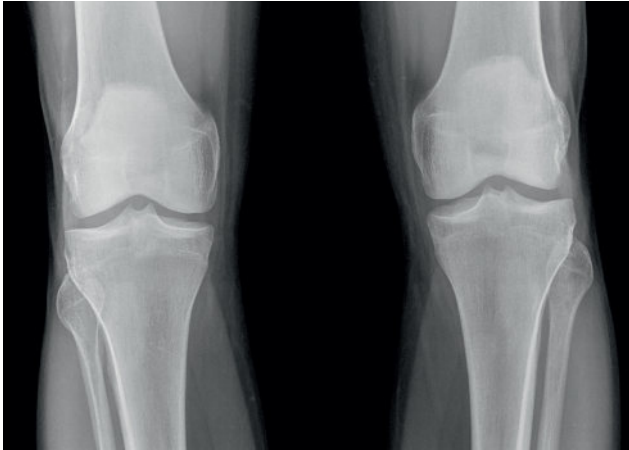
- Protection and automatic control of filament current
- Protection from over current and over voltage (kv, ma)
- Protection from maximum load of x-ray tube
- Operator error or malfunctioning indication
- Swivelling front wheels in anti-static rubber
- Dead-man brake system
- Container for 6 x-ray cassettes
- Variable focus-floor distance 47-204cm
- Rotation of monoblock supporting fork $\pm 180^\circ$
- Rotation of monoblock in fork $0^\circ / +90^\circ$
- Dose per Area meter KermaX with LCD display(optional)
- thermal printer for dose per Area meter KermaX (optional)

OUTSTANDING

- The limited weight of the Xenox M70 unit makes the equipment easy to handle and move
- The equipment can easily overcome small obstacles, such as the difference in level between the bottom of the elevator and the hallway
- The „dead man” brake system, instead of the usual foot brake, is a passive safety device that is engaged if the device is accidentally released during downhill transportation
- Thanks to its limited overall dimensions the operator has good visibility during transportation
- The operator can easily position the equipment using the appropriate handle
- Thanks to the particular movement of the supporting arm and of the radiogenic source fork, the operator can easily centre the X-rays
- The radiogenic source is very easy to use even at floor level
- The control desk is controlled by a microprocessor with digital display of the radiological parameters it allows for an easy and rapid interpretation and selection of the examination parameters through the LCD screen
- The arm has an articulated joint with four-bar linkage system, balanced independently
- The function of the arm group is to support the radiogenic source hanging over the operating space and keep it at right angle with the examination surface
- The arm articulation fulcrum is fitted with a clutch system to keep the extension of the arm in the desired position and to position the machine quickly, in as less manoeuvres as possible to speed up the examination
- The winning design and the colours have been chosen to limit the emotional impact on the patient taking into account the ergonomic features linked with the practical use of the unit



EXCELLENT CLINICAL IMAGES



TECHNICAL SPECIFICATIONS

Xenox M70 | SternMed Mobile x-ray system

X-RAY GENERATOR		4 kW
High frequency generator type	Monoblock	
Max power	Max power 4kw (100kv-40ma-0.8s)	
Max voltage	110kv	
Max current	80ma	
Max mas	200mas	
Mas Selection	24 values from 0.5 to 200mas	
Kv selection	Continuously from 40 to 110kv	
Safety devices and guards	Protection and automatic control of filament current Protection from over current and over voltage Protection from maximum load of x-ray tube Operator error or malfunctioning indication	
Ripple frequency	40khz	
Ripple	1%	
Monoblock thermal capacity	355kj-475khu	
X-RAY TUBE		
Anode	Stationary	
Focal spot	1.8mm	
Anode material	W	
Anode angle	15°	
Thermal capacity	80kj-107khu	
Continuous anode thermal dissipation	Max 250W	
CONTROL DESK		
Type	LCD display 20x4 characters	
OPERATING MODALITIES		
Techniques	2-points (kv,mas)	
Programmed anatomical parts	84	
Part sizes	3 different	
Additional functions	<ul style="list-style-type: none"> • Collimator lamp ON/OFF switch also from the control panel • Possibility to switch potter Bucky ON/OFF • X-ray button with double release with extension cable up to 4 meters 	
POWER SUPPLY		
Standard	Voltage 230V ± 10%, 50/60Hz, 16A max	
Optional	110v	
COLLIMATOR		
Type	Manual control	
Collimation area	Variable field from 0x0 to 43x43cm at 100 cm DFF	
Lamps	High intensity LED lamp 200lux at 100cm	
Collimator rotation	±90°	
Other features	Extractible measurement tape to control DFF	
MECHANICAL		
Wheels	Swivelling front wheels in anti-static rubber	
Brake system	Dead-man	
Cassette holder	Container for 6 X-ray cassette 35x43cm	
Focus-floor distance	47-204cm	
Rotation of monoblock supporting fork	±180°	
Rotation of monoblock in fork	0°/+90°	
Dimensions during transportation	117x71x153h cm	
Weight	110kg	
ACCESSORIES UPON REQUEST		
Possibility of connection to a D.A.P. (kerma measurement system for area) with LCD and relative thermal printer.		



STERNMED[®]

