



STERNMED®



Xenox M300 CV

Mobile c-arm



www.sternmed.de

STERNMED®

The Xenox M300CV is a mobile c-arm, which is ideal for a wide range of clinical applications such as general surgery, orthopedics, and traumatology.



Xenox M300 CV

mobile c-arm

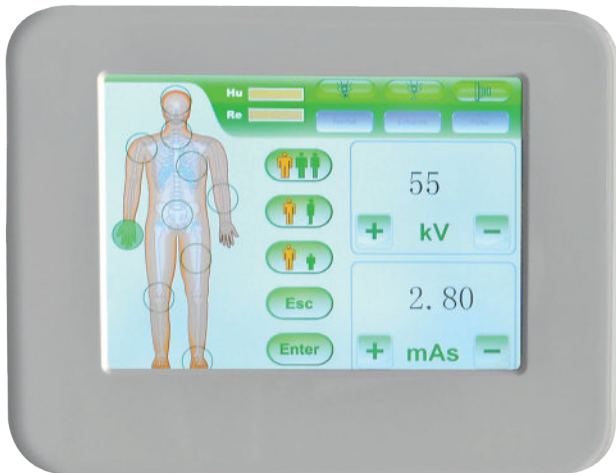


The Xenox M300 CV adopts a larger opening C-arm for easier handling:

- SID:1060 mm
- Opening:860 mm
- Arc depth:700 mm

HIGH PERFORMANCE WORKSTATION

- A high performance imaging workstation and image processing system serves you a convenient interface for integration with network.
- Two monochrome 19" flat-screen monitors
- Work-list registration for seamless integration in your hospital environment.
- DICOM 3.0 network interface for integration with PACS or RIS.
- CD burning for easy image transfer



Touch screen human graphical LCD

APPLICATIONS

- Limbs angiography and pain Interventional diagnosis and treatment
- Neurosurgery angiography and Interventional diagnosis and treatment
- Abdominal and pelvic cavity organ angiography and tumor
- Interventional diagnosis and treatment Hysterosalpingography
- Urinary system diagnosis and treatment
- Digestive system Interventional diagnosis and treatment
- Bone and skeleton Interventional diagnosis and treatment

OUTSTANDING

- High-frequency generator with Super High Power and microfocus optimizes digital images.
- World-class continuous pulse fluoroscopy, intelligent exposure control, achieving extremely low radiation dose.
- Multi-working patterns to meet various clinical needs.
- Multi-leaf and vertical light control reduce the soft X-ray effectively and the skin dose dramatically.
- Toshiba image intensifier and digital CCD camera provide high-quality and high-resolution images.
- High-resolution and dual medical LCD monitors improve image quality dramatically.
- Powerful digital graphic workstation with standard configuration of DICOM 3.0 connected to network perfectly, supports dual registrations of Worklist registration and manual registration.
- Workstation has high-capacity digital storage function, fluoroscopy and digital spot film are stored in digital format.
- Powerful processing capabilities like as, edge enhancement, multiple image, gamma correction, cine loop, Window center-window width, experts' template, record, etc.
- Four-dimensional electric movement control, accurate positioning, flexible and smooth; large rack design provides a huge examine space and more comfortable surgery environment.
- Two touch screen human graphical LCD, intelligent and fast operation
- Dual kinetic control system and double foot brake design for exposure, meeting the demands of clinical operations.

Xenox M300 CV supports four-dimension mechanical movement for high precision operation. It adopts the rotatable touch LCD screen panel, combining the hand parameter & movement control Advanced Isocentric design. Multi-angle dynamic continuous imaging of the same position can be captured and replayed.

Larger C-arm's side movement, up to $15^{\circ}\pm$ ensuring the non-Isocentric human body imaging more proficient.

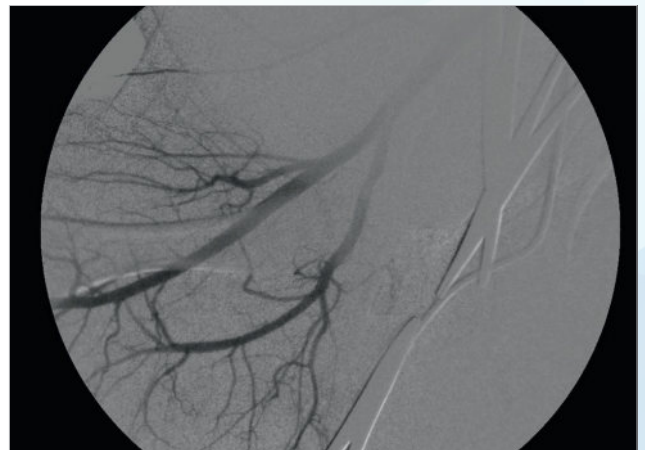
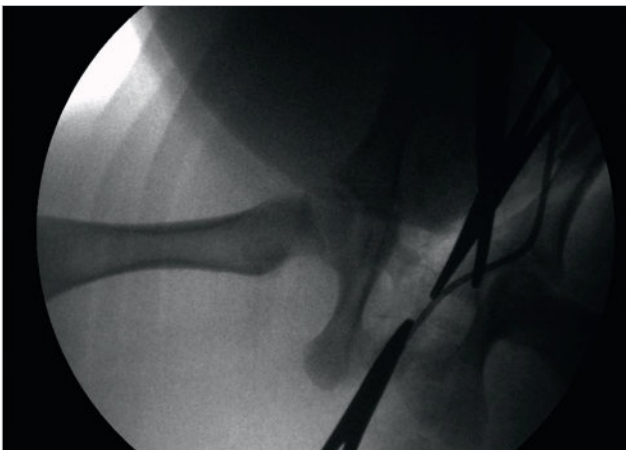
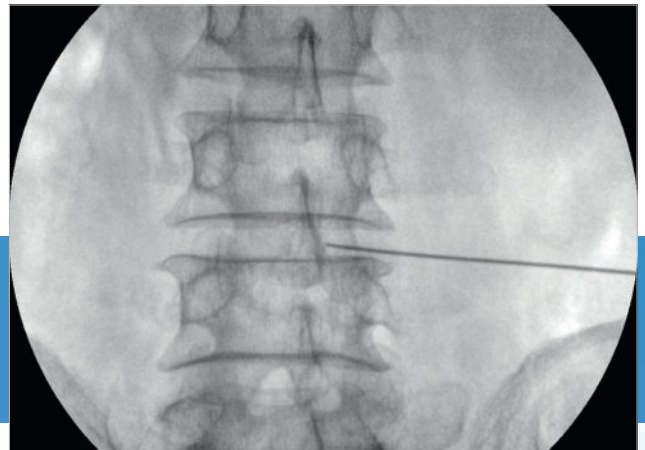
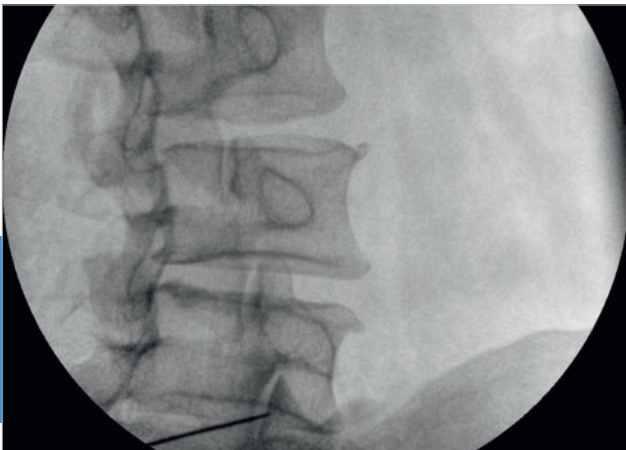


STANDARD CONFIGURATION

- Four-dimensional electric isocenter main frame of C-arm
- High-frequency high-voltage X-ray generator and high frequency inverted power supply (16kW, 60kHz, 125kV)
- 9" Toshiba image intensifier
- Medical use megapixels digital CCD camera
- Digital acquisition and processing workstation
- High quality mini groove grid
- Electric adjustable collimator
- Two monochrome 19" flat-screen monitors
- Hand controller
- Two touch screen human graphical LCD
- Foot brake for exposure



EXCELLENT CLINICAL IMAGES



TECHNICAL SPECIFICATIONS

Xenox M300CV | SternMed mobile C-arm

ELECTRICAL PERFORMANCE

High Frequency	Output power~16.0 kW
Inverter Power Supply	Inverter frequency: 60 kHz
Automatic, Manual Continuous Fluoroscopy	Tube voltage: 40 kV~125kV Continuous adjustment Tube current: 0.3mA~4mA Continuous adjustment
Automatic, Manual Intensifying Fluoroscopy	Tube voltage: 40kV~125kV Continuous adjustment Tube current: 0.3mA~8mA Continuous adjustment
Automatic, Manual Pulse Fluoroscopy	Tube voltage: 40kV~125kV continuous adjustment Tube current: 0.3mA~30mA continuous adjustment Pulse frequency: 10-0.1 frame/s continuous adjustment
DSI, Digital Spot Film	10-0.1 frame/s can be chosen freely
Radiography tube voltage, mA	40kV~125kV 200 mA

X-RAY TUBE

Nominal X-ray tube voltage:	130kV
Nominal value of focal spot:	0.3/0.6
Nominal anode input power:	5kW at small focus ;17kW at large focus
Anode revolving speed:	2800RPM
X-ray tube special for high frequency	Rotary anode focus: 0.6/0.3 Anode thermal capacity: 212kJ (284kHU)

IMAGE SYSTEM

Image Intensifier	TOSHIBA 9 "image intensifier
CCD Camera	Medical use 1 million-pixel digital CCD camera
CCU	Real time collection, horizontal, vertical mirror image, recursive noise reduction can be adjusted, multi-images storage, image patching, last image freeze
Work Station Software	Storage without damage, multi-images display, image W/L real time adjustment, grayscale switch, region of interest balance, GAMMA correction, flip, noise reduction, intensifying, smoothing, sharpening, compression, zoom in, measurement, remark, picture-text type set print, expert template, DICOM image transmit, DICOM image Print, Cine-loop, Image Imprinting, worklist registration

STRUCTURE PERFORMANCE

Direction Wheel	360°rotation
Main Wheel	±90°rotation
C-arm	Motorized forward and backward movement: 200mm Motorized rotation around horizontal axis: ±180° Rotation around vertical axis: ±15° Motorized slip on orbit: 120° (+90°~-30°) Motorized ascending and descending of pillar: 400mm SID 1060 mm Open 860 mm Arc depth 700 mm



STERNMED[®]

