

# HYDRASYS 2 SCAN

## GEL TRACEABILITY STEPS 2 & 3: THE FULLY INTEGRATED ANALYTICAL SOLUTION FOR AGAROSE GEL ELECTROPHORESIS

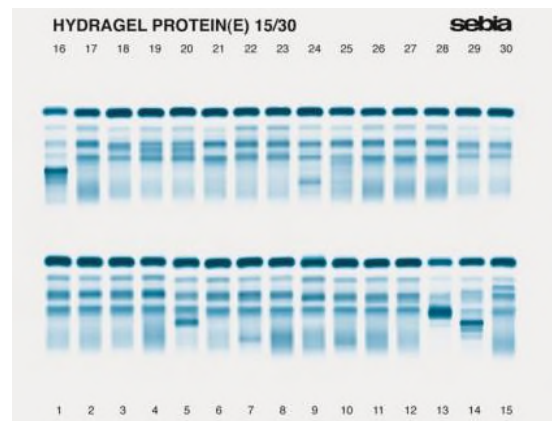
HYDRASYS 2 SCAN is the "all-in-one" analyzer for gel electrophoresis. The system offers analytical solutions for the highest level of performance, matching clinical diagnostic requirements.

HYDRASYS 2 SCAN carries out electrophoresis steps, from sample application to final reading. It is a fast and easy to operate instrument, offering a comprehensive test menu of more than 60 HYDRAGEL programs. HYDRASYS 2 SCAN is designed to accommodate all workflow requirements.

The instrument is also available as a FOCUSING version, giving access to the high specialization tests.

### TEST MENU

- SERUM Proteins  
(<http://www.sebia.com/en-EN/produits/gel-electrophoresis-test-menu#PROTEIN & IMMUNOFIXATION>)
- SERUM Immunofixations  
(<http://www.sebia.com/en-EN/produits/gel-electrophoresis-test-menu#PROTEIN & IMMUNOFIXATION>)
- PLASMA Immunofixations  
(<http://www.sebia.com/en-EN/produits/gel-electrophoresis-test-menu#PROTEIN & IMMUNOFIXATION>)
- SERUM Lipoproteins  
(<http://www.sebia.com/en-EN/produits/gel-electrophoresis-test-menu#LIPOPROTEIN>)
- SERUM Iso-enzymes  
(<http://www.sebia.com/en-EN/produits/gel-electrophoresis-test-menu#ISO-ENZYME>)
- URINE Proteins  
(<http://www.sebia.com/en-EN/produits/gel-electrophoresis-test-menu#URINE & IMMUNOFIXATION>)
- (<http://www.sebia.com/en-EN/produits/gel-electrophoresis-test-menu#URINE & IMMUNOFIXATION>)URINE Immunofixations  
(<http://www.sebia.com/en-EN/produits/gel-electrophoresis-test-menu#URINE & IMMUNOFIXATION>)



- EN/produits/gel-electrophoresis-test-menu)
- CEREBROSPINAL FLUID (CSF) & SECRETION SAMPLES Immunofixations (<http://www.sebia.com/en-EN/produits/gel-electrophoresis-test-menu#CSF>)
- PACKED RED BLOOD CELLS (<http://www.sebia.com/en-EN/produits/gel-electrophoresis-test-menu#HEMOGLOBIN>)

## TECHNICAL CHARACTERISTICS

### Design

- Small footprint
- Peltier based temperature control device for fast and accurate temperature regulation
- Simple flexible programming through LCD touch screen interface
- > 60 optimized migration programs
- > 10 staining and washing programs
- Easy maintenance

### Autonomy / sample loading

- From 1 to 54 sample gels
- Up to 3 gels simultaneously (migration, staining and reading)



### Throughput

- Proteins: up to 162 tests/h
- Immunofixations: up to 17 per hour with the IF fast program<sup>2</sup>
- Hemoglobins: up to 30 tests/h

### Sample types

- Serum
- Plasma<sup>1</sup>
- Urine
- CSF
- Secretion samples
- Packed red blood cells

### Positive ID

- Connection with the pipetting station ASSIST (<http://www.sebia.com/en-EN/produits/assist>)
- Barcode management for sample applicators and gels
- Linked to the data management software Phoresis CORE (<http://www.sebia.com/en-EN/produits/phoresis-core>)

### Applicators

- Disposable microporous applicators (Sebia proprietary technology)
- 6, 7, 15 & 18 wells to be used on the 1 to 54 sample gels

### Optimized reading (SCAN versions)

- Two-dimensional measurement
- Direct visualization of the gel
- Accurate optical density measurement
- Precise quantification of all fractions
- Reading process by transmission
- Automatic correction of light source heterogeneity
- Automatic detection of the electrophoretic track position on the gel
- Perfect stability of the system during data capture

## HYDRASYS 2 SCAN

- Software: operated by Phoresis CORE (<http://www.sebia.com/en-EN/produits/phoresis-core>)
- Weight:
  - 66 lb
  - 30 kg
- Dimension:
  - (L) 30 x (W) 20 x (H) 9 in
  - (L) 76 x (W) 51 x (H) 23 cm



## CATALOG NUMBERS

HYDRASYS 2 SCAN (PN 1200)

HYDRASYS 2 (PN 1201)

HYDRASYS 2 SCAN FOCUSING (PN 1202)

HYDRASYS 2 FOCUSING (PN 1203)

*Related accessories not provided with instruments: Screen, PC, UPS and printer.*

<sup>1</sup>Under development

<sup>2</sup>Phoresis version 2.26 and above, contact your Sebia representative for more information

*NOTE: Contact your Sebia representative to verify the product availability in your country.*

## OTHER GEL ELECTROPHORESIS INSTRUMENTS



© SEBIA 2015

[SITE MAP \(/EN-EN/PAGE/SITE-MAP\)](#)

[FOLLOW US ON LINKEDIN \(HTTPS://WWW.LINKEDIN.COM/COMPANY/106560/ADMIN/\)](https://www.linkedin.com/company/106560/admin/)

[LEGAL NOTICE \(HTTPS://WWW.SEBIA.COM/EN-EN/PRODUITS/LEGAL-NOTICE\)](https://www.sebia.com/en-EN/PRODUITS/LEGAL-NOTICE)