

Clinical Electrophoresis

Product Portfolio

helena
Biosciences Europe



Total electrophoresis at the touch of a button.

V8 NEXUS is the most connected, versatile and high-performance analytical solution.



- 96
tests/hr
 Serum Proteins
- 96
tests/hr
 Urine Proteins
- 19
tests/hr
 Immunodisplacement
- 16
tests/hr
 CDT
- 32
tests/hr
 Hb UltraScreen
- 32
tests/hr
 Haemoglobin A1c
- NEW
for 2019
 Glyco Liver Profile

V8 NEXUS from Helena Biosciences continues the evolution of clinical capillary electrophoresis, offering higher performance, new automation, methods and best-in-class software with the fully touchscreen-optimised Platinum 5.1

Advanced Capillary Electrophoresis System

- Whole-blood testing
- Multi-wavelength analysis
- Lab track connectivity

New, Improved Methods and Analytical Automation

- High-speed Serum Proteins
- Hb UltraScreen and HbA1c
- Unique Glyco Liver Profile

Platinum 5 Analytical Interpretation Software

- Touch screen control
- Real-time V8 monitoring
- Automated Expert System

Catalogue numbers for tests and analysers

Instruments

As the original pioneers in clinical electrophoresis, we supply the most comprehensive portfolio of world-class instrumentation, software and assays, encompassing manual and automated diagnostic systems, and routine and specialist testing solutions, for flexibility and performance in your laboratory.



**SAS-MX
IEF Chamber**
REF. 4065



**SAS-MX
Gel Chamber**
REF. 4063



SAS-1 Plus / SAS-2
Compatible with V8 NEXUS
REF. 1531, 1212



SAS-3 / SAS-4
Compatible with V8 NEXUS
REF. 1527, 1529



V8 NEXUS
Automated capillary analyser
REF. 800008, 800018

Product Description

Page

Serum Proteins	12	-	100100	200100	300100	-
Serum Protein (Split Beta)	13	-	100200	200200	300200	800500 800800
Serum Protein (High Resolution)	14	-	101300	200700	300700	-
Urine Protein Analysis	15	-	100500	200400	300400	800410 800411 800412
Immunotyping	16	-	100300 100400	200300	300300	800300
Urine Immunotyping	17	-	100600	200301* 200400*	300301* 300400*	800300
Pentavalent Screen	17	-	-	200301 200406	300400 300406	-
Alkaline Haemoglobin	18	-	100800	200900	300900	-
Acid Haemoglobin	19	-	100700	201000	-	-
Alkaline Phosphatase	20	-	102000	200800	300800	-
CK Isoenzymes	21	-	-	201200	-	-
LD Isoenzymes	21	-	-	201300	-	-
Lipoproteins	22	-	101200	201100	-	-
Cholesterol	22	-	-	200600	-	-
HDL Cholesterol	23	-	101000	200500	-	-
Transferrin IEF	24	-	-	103100	103100	-
Alpha-1-Antitrypsin	24	-	-	-	301000	-
IgG IEF	25	102200 104200	-	102200	102200 104200	-
Haemoglobin A1c	34	-	-	-	-	801000
Haemoglobin UltraScreen	34	-	-	-	-	801100
Carbohydrate Deficient Transferrin	34	-	-	-	-	803110
Glyco Liver Profile	34	-	-	-	-	807001 807002 807003

Gel ordering details begin on page 26

See page 34 for capillary tests

* in combination with user specific choice of antisera

SAS product range — the complete clinical gel electrophoresis product range

SAS-1 Plus and SAS-2

Integrated electrophoresis solution for laboratories running 1200-6000 tests per year.

- Up to 72 Serum Proteins per hour
- Up to 8 Immunofixations per hour



SAS-3 and SAS-4

Integrated electrophoresis solution for laboratories running 4000-30000 tests per year.

- Up to 300 Serum Proteins per hour
- Up to 18 Immunofixations per hour



SAS-1 Plus automated compact electrophoresis analyser

SAS-1 Plus is the ideal choice for laboratories conducting up to 120 Serum Proteins per week. Acclaimed by specialists all over the world, SAS-1 Plus supports an extensive range of clinical assays, providing users with a compact instrument that is fast, flexible, economical and ultra-reliable.

- Intuitive, multiple-language user interface
- Patented sample applicator technology ensures full protein application
- 6/12/24 Serum Protein samples applied simultaneously; 2/4 samples for Immunofixation
- Precise antisera application for IFEs ensures reproducible lane coverage
- Continuous loading of different assays
- 20 editable gel programmes, with all SAS-1 Plus tests pre-programmed

SAS-2 automated compact gel processor system

Partnering the SAS-1 Plus, Helena Biosciences' SAS-2 gel processing system is the ideal solution for small-to-medium sized laboratories. Designed with reliability, accuracy and efficiency in mind, SAS-2 automates the staining, destaining and drying of the gel, and is optimised to give extraordinary clarity of protein gels.

- Compact bench-top analyser
- Walk-away automation reduces operator intervention
- Automated gel processing with variable staining, destaining and drying programmes
- 20 editable gel programmes, with all SAS-1 Plus tests pre-programmed

SAS-3 automated compact electrophoresis analyser

SAS-3 has gained a reputation as a superior system for a wide range of assays, ideal for laboratories conducting 75-600 tests per week. All of this reliability and performance comes in a bench-top analyser which applies a precise sample volume directly to the gel using patented sample applicators ensuring no protein loss.

- Intuitive, multiple-language user interface
- Supports a wide range of gel sizes for flexible throughput requirements
- 12/24/40/60/80/100 Serum Protein samples applied simultaneously; 2/4/9 samples for Immunofixation
- Automated reagent and antisera application for reagent-based assays
- Optional bar code reader for sample audit trail
- 17 editable gel programmes, with all SAS-3 tests pre-programmed

SAS-4 automated compact gel processor system

The SAS-4 gel processor is the partner to our high performance SAS-3 electrophoresis analyser. SAS-4 automates the staining, destaining and drying of electrophoresis gels, and is optimised to provide extraordinary clarity of protein gels. Pre-programmed and compatible with a wide range of gel sizes, it minimises operator time and intervention.

- Compact bench-top system with walk-away automation
- Prepared staining/destaining solution lasts for up to 1000 samples
- Automated gel processing with user-defined programming
- All liquids external — no external level sensors
- Optimised for gel clarity
- Minimum service requirements
- 17 editable methods

SAS-MX Gel Chamber

High performance with low prices

Established around the world for nearly 30 years, SAS-MX is simple and reliable technology matched by an exceptionally wide range of assays, delivering high performance, accuracy and reproducibility.

The standard chamber is available with an optional IEF chamber for isoelectric focusing.

- Runs Titan III cellulose acetate or agarose gel
- For *in vitro* and research labs
- Plugs straight into most power supplies
- Reusable acetate applicators for 8 samples
- Optimised gel range
- Unique interlock safety system breaks electrical circuit when chamber lid is removed
- Platinum electrodes for agarose-based, high-resolution electrophoresis



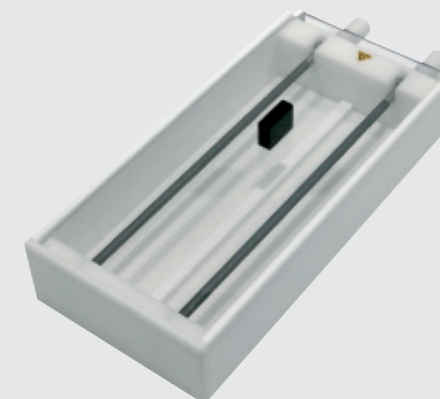
SAS-MX IEF Chamber

Affordable and reliable isoelectric focusing solution

Straightforward equipment and consistent results with over 30 years experience in clinical electrophoresis.

The IEF chamber features:

- Compact design
- Reusable carbon electrodes
- Safety cut off lid
- Fits most lab power supplies
- Footprint: (W)13cm x (D) 29cm x (H) 6cm
- Weight: <1kg
- CE Marked
- Accessories Supplied:
 - Carbon Electrodes x 2
- Accessories Required:
 - SAS-MX Chamber Cooling Device — Cat: 3039



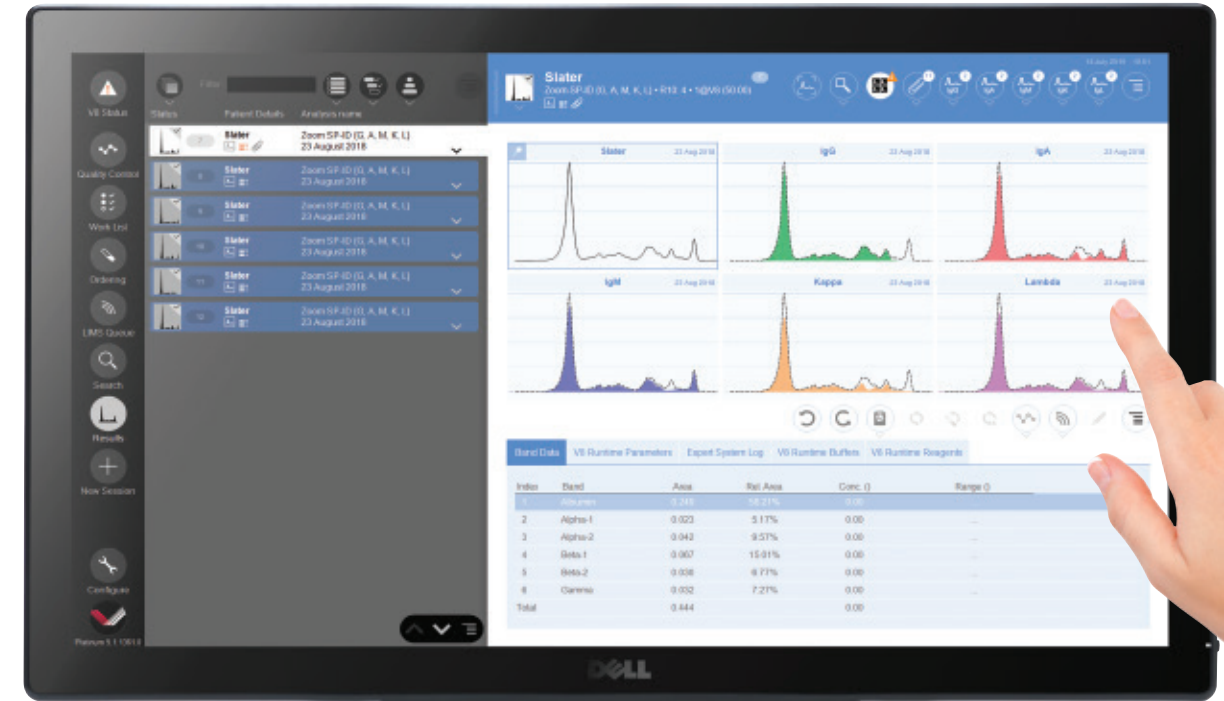
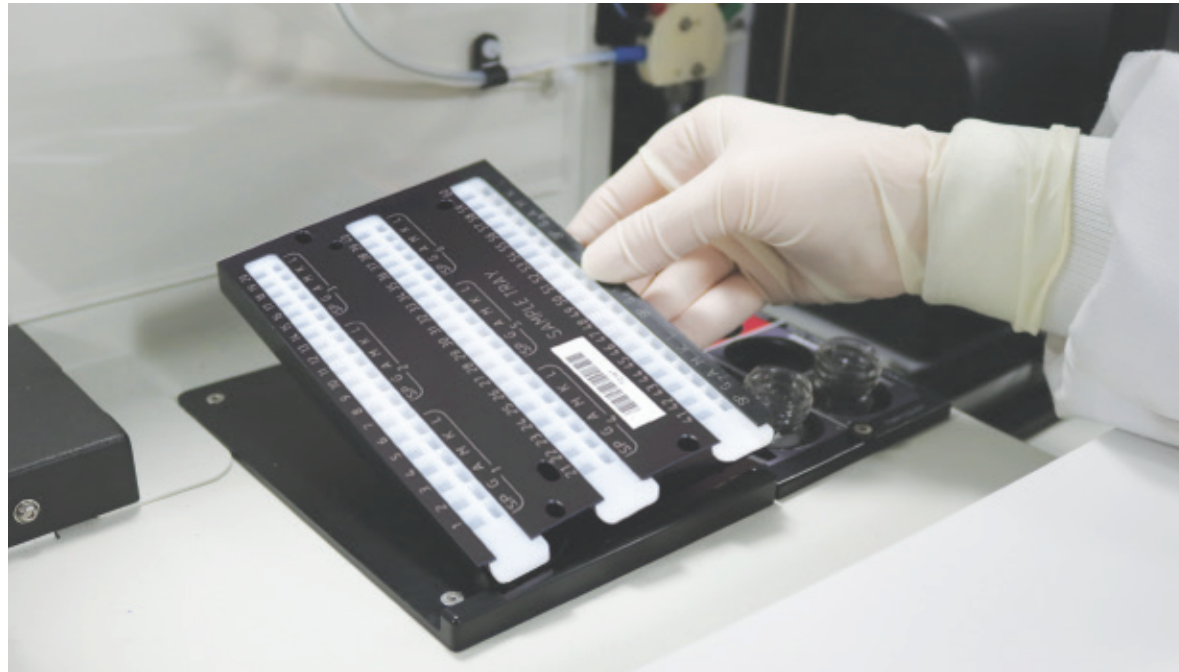
Platinum 5.1 and V8 Nexus: the heart of your analytical workflow

V8 NEXUS gel integration

V8 Nexus provides the unique ability to prepare sample trays for gel electrophoresis testing and confirmation, with automated dilutions and complete end-to-end patient ID and reagent traceability. Fully incorporated into our Truidentity audit trail functionality, V8 Nexus's unique gel integration is a must-see feature for clinicians and managers alike.



Putting you in complete control of your analytical, editing and reporting workflow. Interact with your data like never before. Revolutionary and powerful new analysis and interpretation software, designed to accelerate and simplify your analytical workflow.



1

V8 Nexus prepares the gel tray and can handle up to 160 samples per hour

2

The gels are processed on Helena Biosciences' semi-automated gel electrophoresis systems

3

The gel is scanned, edited and reported using Platinum 5 software and all results are stored in a single, consolidated database

Touch screen navigation

- NEW Clearer, industry-leading touch interface
- NEW Improved gel navigation and display
- NEW Extended information displayed for each result
- Intuitive, multi-language software
- Natural workflows from scan to reporting, with pre-prepared report templates supplied

Gel scan, storage and data integrity

- Full colour density scan of gels in one pass
- Twice as fast sample scanning than competitors
- Gel image generated from raw data

Patient demographics

- Fully definable and searchable demographics
- 'Plug and play', bidirectional LIMS connectivity
- Import patient data from LIMS including up to 12 chemistry values
- Fully customisable, self-checking database
- Full comparison of patient data

Complete auditing and validation

- NEW Automatic QC test ordering
- Levey-Jennings capability with Westgard rules
- Full sample, reagent and user audit trail including individual access and history for analysis security
- LIMS authorisation and quality release system for authorised users

Sample analysis and interpretation

- NEW Improved Expert System automatically flags abnormal results for reflex testing to immunotyping
- NEW Instant haemoglobin variant library overlay
- NEW Improved overlay facilities for comparisons and patient monitoring
- NEW User-defined report publishing with beautifully clear report templates
- NEW Improved visual sensitivity for ID results
- Full editing tools for baselines, peaks and true results
- Enhanced image contrast functionality

Powerful data management

- NEW Up to 6x increase in performance
- NEW Unlimited database capacity
- NEW Pooled data storage from multiple analysers
- Unlimited additional searchable archives
- Customised gel and capillary method parameters
- Efficient data storage with automated data back-up
- Network database functionality for storage of data on laboratory networks
- Remote viewing of data
- Automated barcode input of QC ranges and data

Instrument diagnostics and monitoring

- Hardware feedback for real-time status updates
- Proactive automated maintenance procedures with scheduled start-up and shut-down
- Service alert

All patient names in this document are fictitious. Any resemblance to real people is purely coincidental.

The SAS Advantage — unique technologies and gel sizes optimised for your laboratory



Full multi-sample, historical audit trail from patient sampling to reporting



Patented pre-cast, semi-dry gel block system — no electrode wicks or sponges



Quick, reliable and accurate market-leading patented sample applicator system



On-board Peltier-controlled temperature regulation for improved resolution, reagent incubation and gel drying



Run serum and urine samples including Pentavalent and Immunofixation simultaneously on the same gel



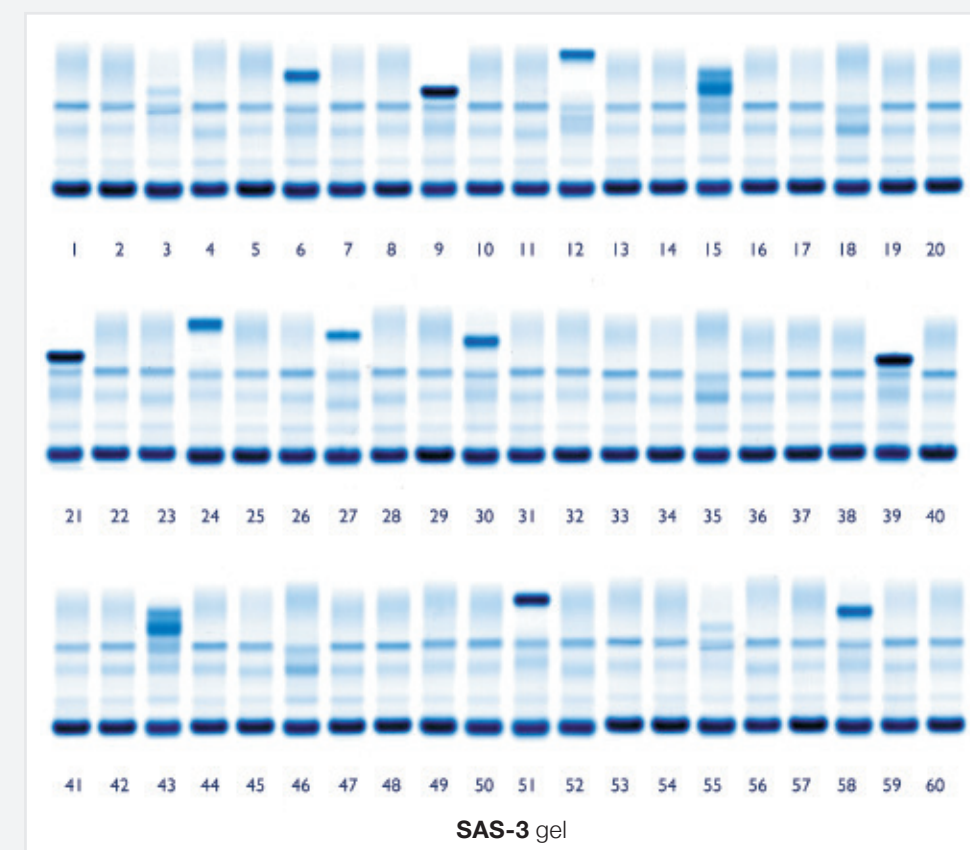
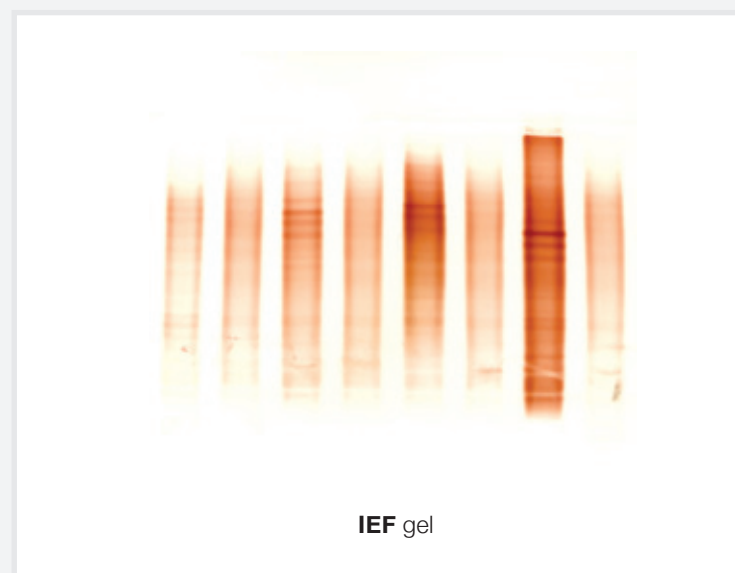
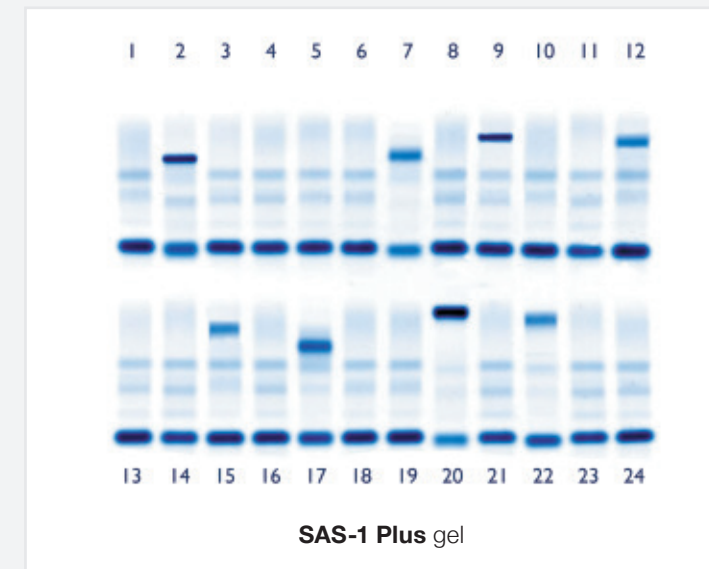
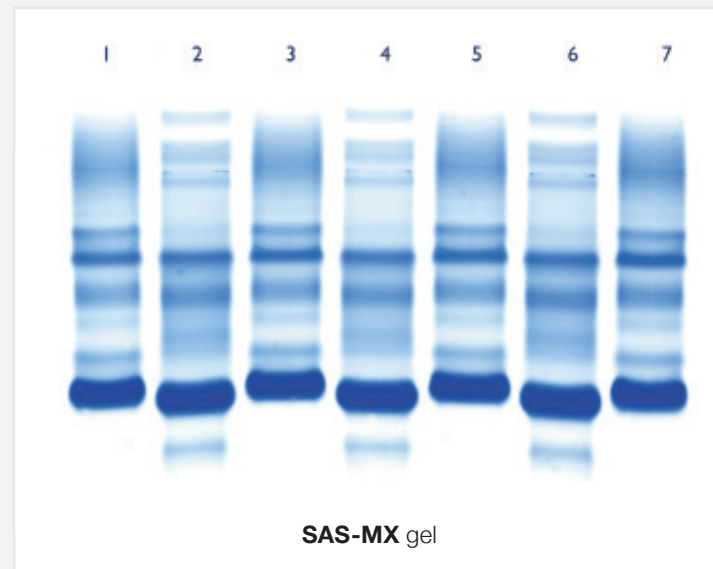
SAS-3 supports the widest range of gels, in two optimised sizes, for improved cost savings



High voltage applications for increased resolution and multiple isoelectric focusing methods

Unique V8 Nexus gel preparation, ideal for:

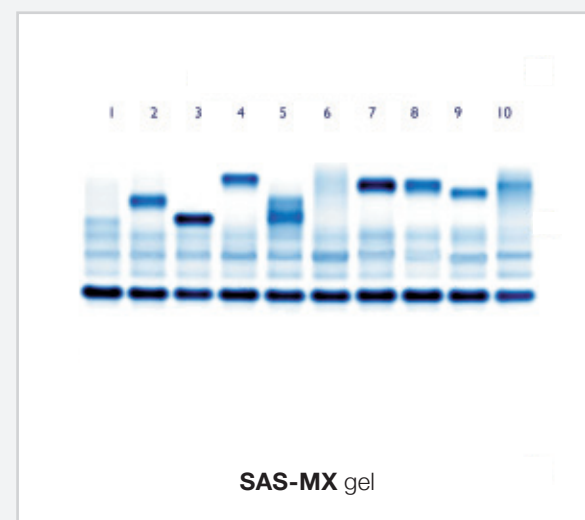
- Immunofixation
- Urine Immunofixation
- Urine Protein Analysis
- Pentavalent Screen



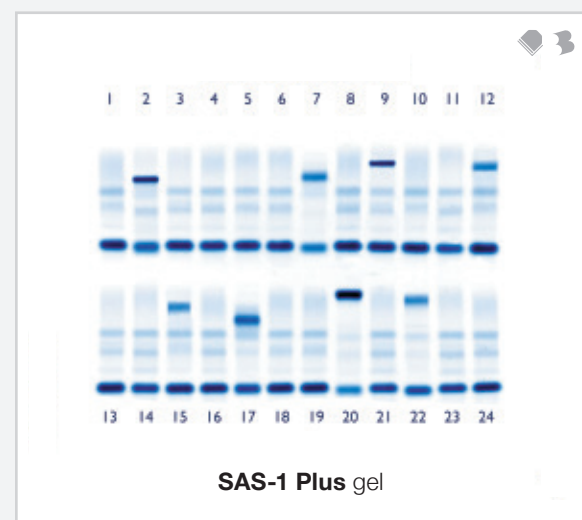
Serum Protein

Helena Biosciences has produced the serum protein 5 band gel using an advanced gel formulation ensuring enhanced resolution and sensitivity within the Gamma region.

- Up to 100 samples can be applied simultaneously
- Complete serum protein profile
- Clear and identifiable bands produced
- All assay components included within the kit

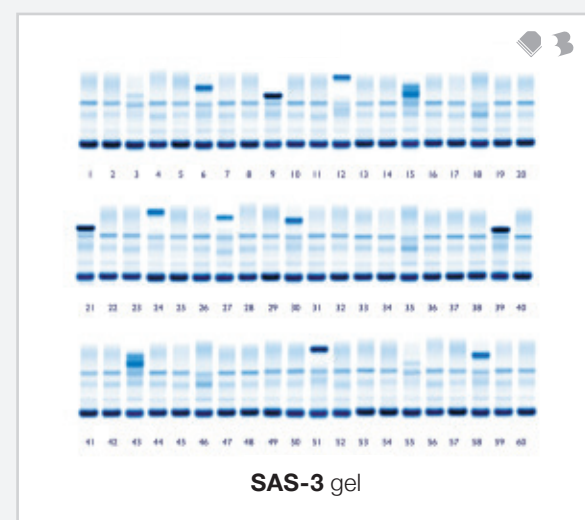


REF: 100100
10 tests/gel
10 gels/kit



REF: 200100
24 tests/gel
10 gels/kit

- Compatible with SAS-3
- Gel trays can be prepared on V8 Nexus



REF: 300100
60 tests/gel
10 gels/kit

- Gel trays can be prepared on V8 Nexus



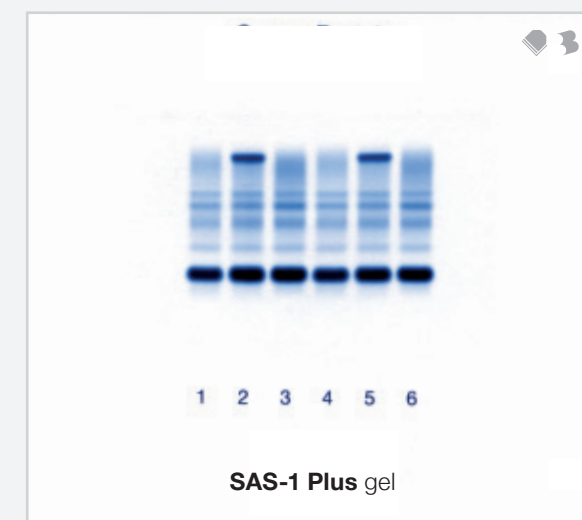
Serum Protein (Split Beta)

Helena Biosciences has produced an additional serum protein 6 band gel for differentiation of $\beta 1$ and $\beta 2$ fractions. The split beta gel uses an advanced gel formulation ensuring enhanced resolution and sensitivity within the Beta and Gamma regions.

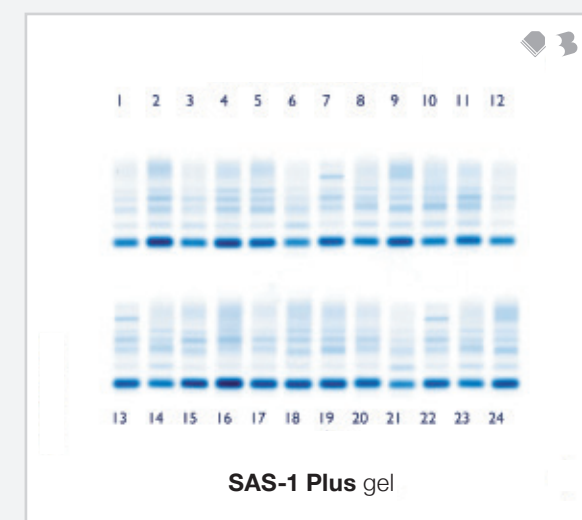
- Up to 60 samples can be applied simultaneously
- Complete serum protein profile
- Resolution of $\beta 1$ and $\beta 2$ fractions to aid identification of β region migrating monoclonal proteins
- All assay components included within the kit



REF: 100200
10 tests/gel
10 gels/kit

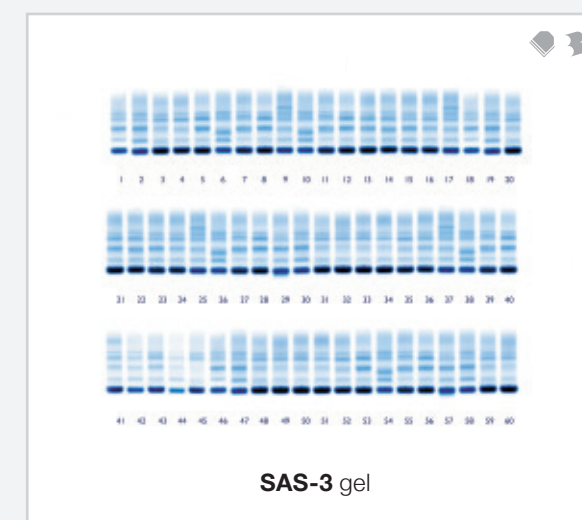


REF: 200206
6 tests/gel
10 gels/kit



REF: 200200
24 tests/gel
10 gels/kit

- Compatible with SAS-3
- Gel trays can be prepared on V8 Nexus



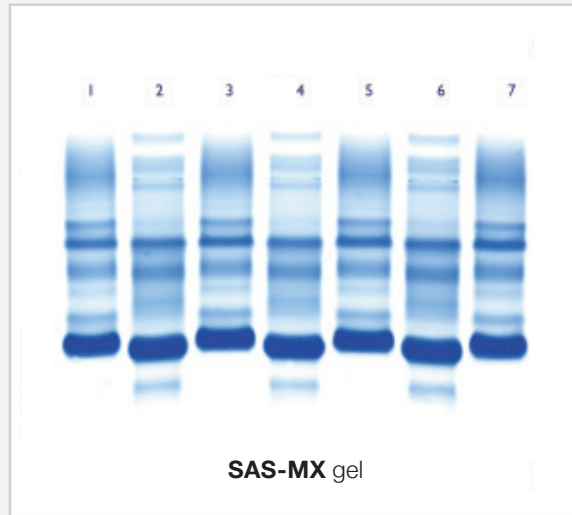
REF: 300200
60 tests/gel
10 gels/kit

- Gel trays can be prepared on V8 Nexus

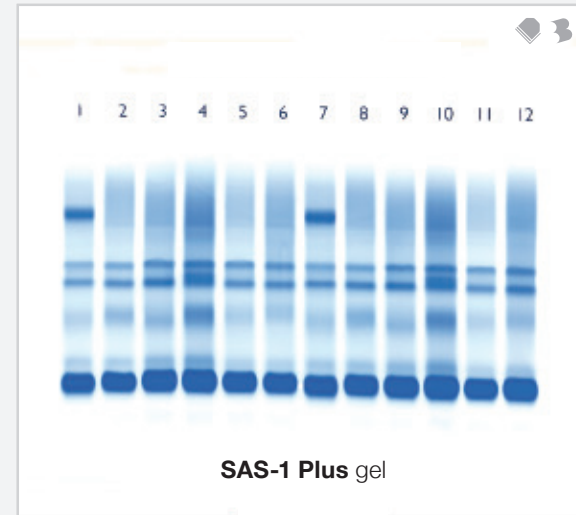
Serum Proteins (High Resolution)

By using high-resolution agarose electrophoresis, 15 or more proteins can be visualised in the serum. This superior resolution and sensitivity separates and detects proteins with similar electrophoretic mobilities.

- Up to 20 samples can be applied simultaneously on SAS-3
- Suitable for urine and CSF analysis
- All assay components included within the kit

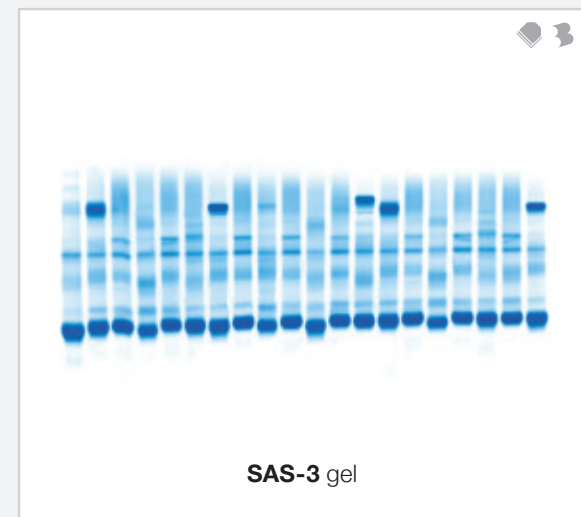


REF: 101300
7 tests/gel
10 gels/kit



REF: 200700
12 tests/gel
10 gels/kit

- Compatible with SAS-3



REF: 300700
20 tests/gel
10 gels/kit

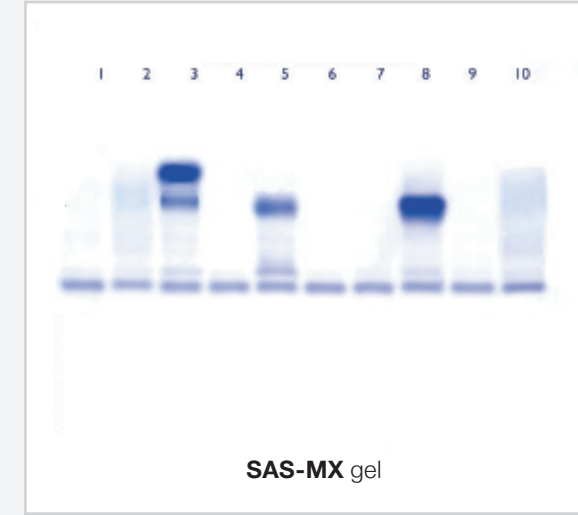
- Minimum order quantities apply to this kit



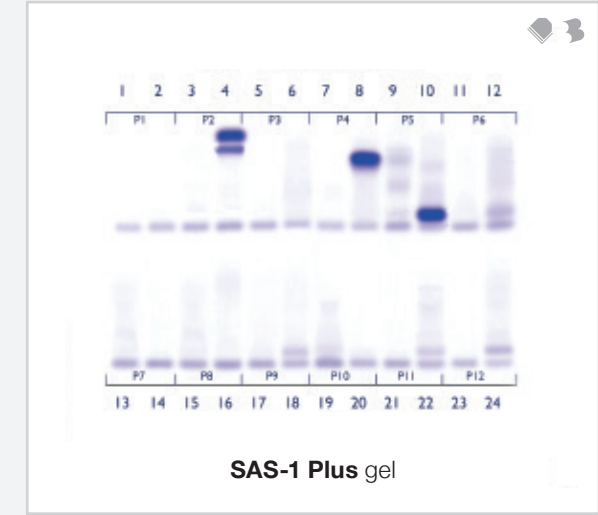
Urine Protein Analysis

Helena Biosciences Urine Protein gel offers a unique and completely flexible approach to urine protein analysis and screening techniques. The applicator system ensures unconcentrated urine can be applied directly to the gel without the loss of protein.

- Standard urine screening
- Tailored combination of antisera for Bence Jones protein screening
- Direct urine sampling – no need to concentrate
- Clear and identifiable bands produced
- All assay components included within the kit

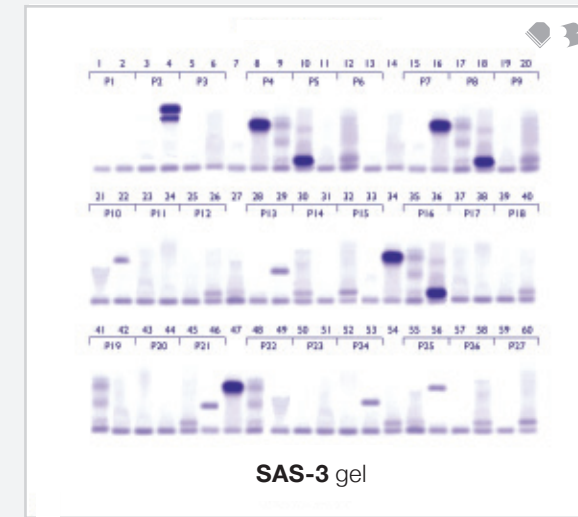


REF: 100500
10 tests/gel
10 gels/kit



REF: 200400
24 tests/gel
10 gels/kit

- Compatible with SAS-3
- Gel trays can be prepared on V8 Nexus



REF: 300400
60 tests/gel
10 gels/kit

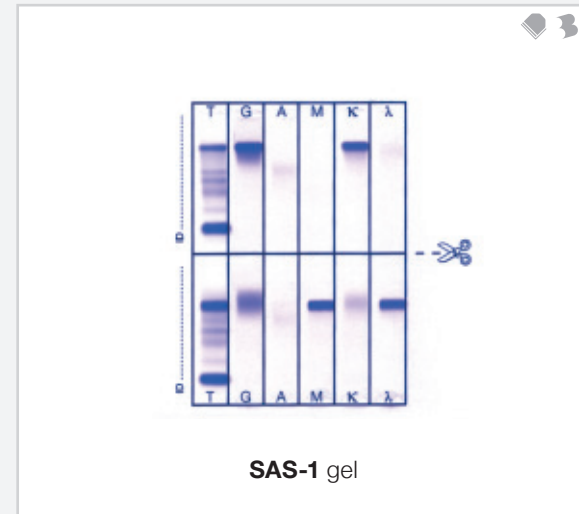
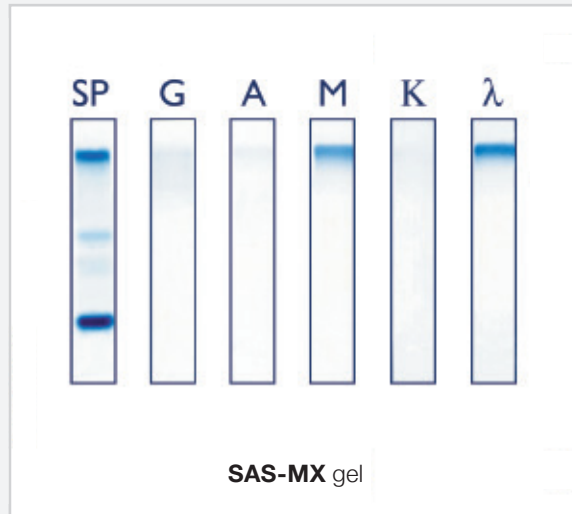
- Gel trays can be prepared on V8 Nexus



Immunofixation

Immunofixation Electrophoresis (IFE) is characterised by its enhanced sensitivity, ease of interpretation, quick test results and excellent resolution. The SAS-MX IFE-1 Kit allows patient sample immunotyping in just over an hour with the use of colour coded antisera.

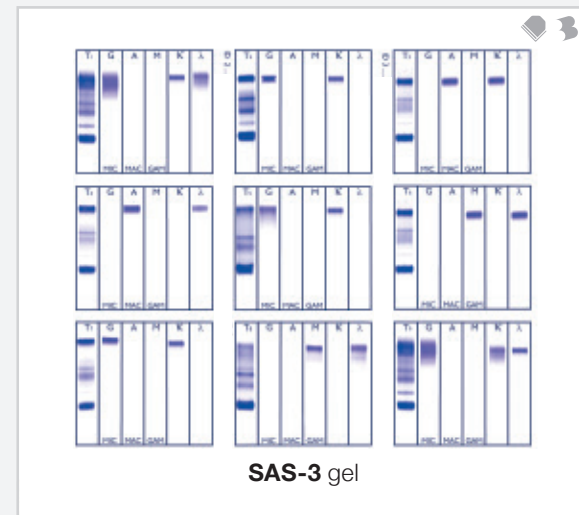
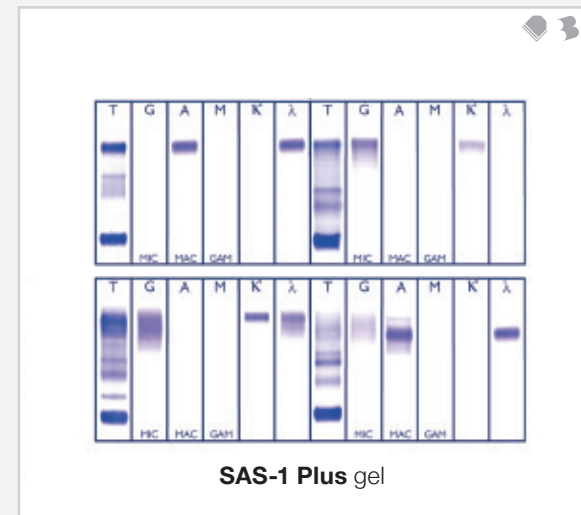
- Specific standardised sample preparation
- Up to 9 samples applied simultaneously on SAS-3
- Serum or urine protocols included
- Direct urine sampling — no need to concentrate
- Clear and identifiable bands produced
- All assay components included within the kit



REF: 100300
1 test/gel
10 gels/kit

REF: 100400
2 tests/gel
10 gels/kit

REF: 202300
2 tests/gel
10 gels/kit



REF: 200300
4 tests/gel
10 gels/kit

- Compatible with SAS-3
- Gel trays can be prepared on V8 Nexus

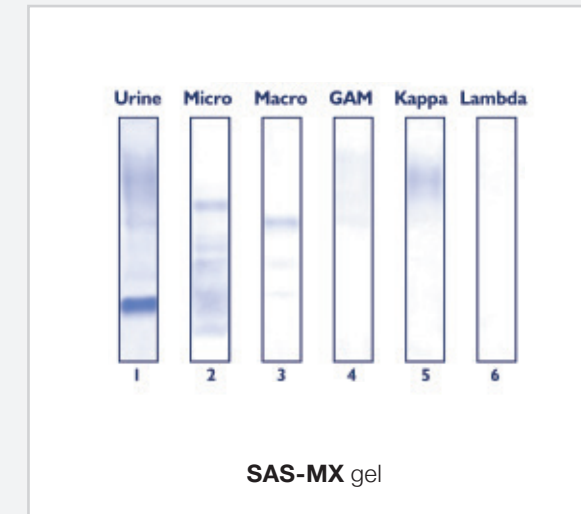
REF: 300300
9 tests/gel
10 gels/kit

- Gel trays can be prepared on V8 Nexus

Urine Immunofixation

Urine Immunofixation Electrophoresis (IFE) is a rapid sensitive and specific method for identifying proteins in urine, aiding in the diagnosis of proteinuria and plasma cell dyscrasia. Combining sensitivity and specificity the SAS-MX Urine IFE-1 Kit offers a rapid cost-effective method for urine IFEs.

- Direct urine sampling — no need to concentrate
- Clear and identifiable bands produced
- Discrimination of Bence Jones proteins



REF: 100600
1 test/gel
10 gels/kit

REF: 200301
4 tests/gel
10 gels/kit

REF: 200400
4 tests/gel
10 gels/kit

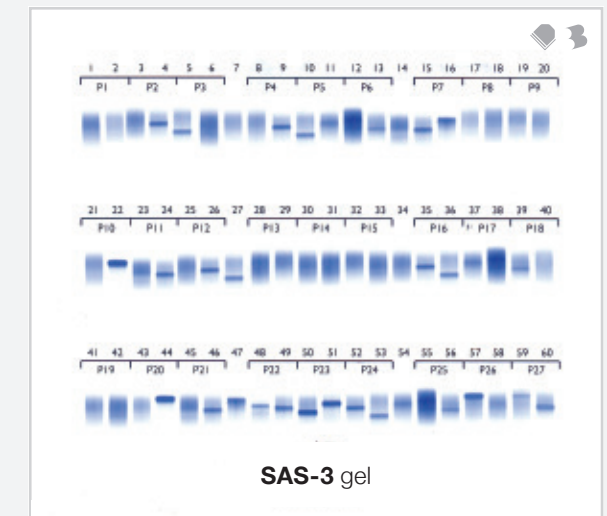
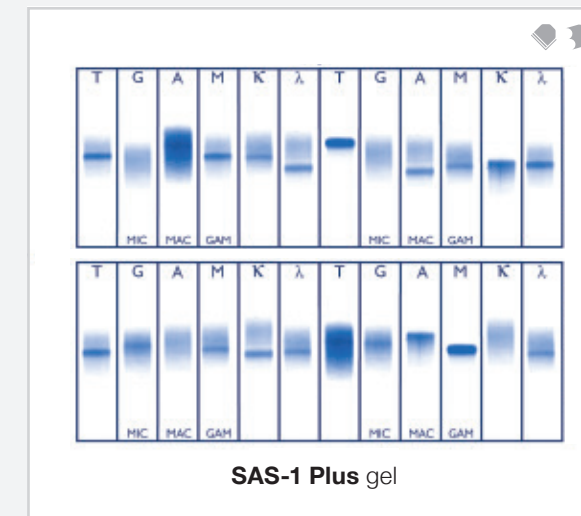
REF: 300301
9 tests/gel
10 gels/kit

REF: 300400
9 tests/gel
10 gels/kit

Pentavalent Screen

The unique Pentavalent screen products from Helena Biosciences allow direct screening of serum and/or urine samples for monoclonal proteins either in place of standard screening methods or as a pre-IFE confirmation.

- Pentavalent Fixation
- Direct urine sampling — no need to concentrate
- Clear and identifiable bands produced



REF: 200301*
12 tests/gel
10 gels/kit
* + 200406 + 321200

- Compatible with SAS-3
- Gel trays can be prepared on V8 Nexus

REF: 300400*
60 tests/gel
10 gels/kit
* + 300406 + 321300

- Gel trays can be prepared on V8 Nexus

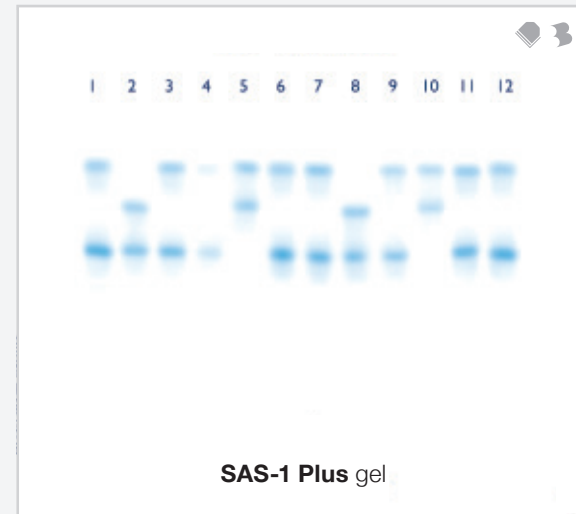
Alkaline Haemoglobin

Helena Biosciences has produced the Alkaline Haemoglobin gel using an advanced formulation ensuring enhanced resolution and sensitivity for initial haemoglobin screening.

- Up to 40 samples can be applied simultaneously on SAS-3
- Clear and identifiable bands produced
- All assay components included within the kit



REF: 100800
10 tests/gel
10 gels/kit



REF: 200900
12 tests/gel
10 gels/kit

- Compatible with SAS-3
- Gel trays can be prepared on V8 Nexus



REF: 300900
40 tests/gel
10 gels/kit

- Gel trays can be prepared on V8 Nexus

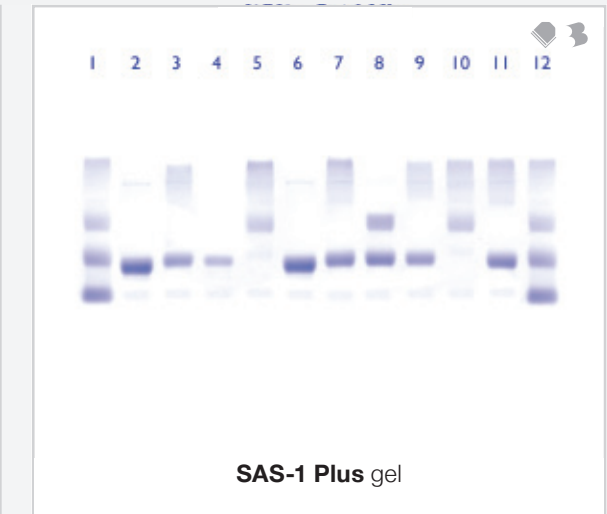
Acid Haemoglobin

Helena Biosciences has produced the Acid Haemoglobin gel using an advanced gel formulation ensuring enhanced resolution and sensitivity for the confirmation of abnormal haemoglobin samples.

- Up to 12 samples can be applied simultaneously
- Clear and identifiable bands produced



REF: 100700
10 tests/gel
10 gels/kit



REF: 201000
12 tests/gel
10 gels/kit

- Compatible with SAS-3
- Gel trays can be prepared on V8 Nexus



Alkaline Phosphatase

This high resolution agarose electrophoresis method for separation of Alkaline Phosphatase isoenzymes provides excellent discrimination with enhanced separation of bone and liver fractions. The gel formulation ensures separation of the macrohepatic fraction from bone and liver.

- Up to 20 samples per gel
- Single lane analysis for all Alkaline Phosphatase isoenzyme fractions
- Clear and identifiable bands produced



REF: 102000
10 tests/gel
10 gels/kit



REF: 200800 • Compatible with SAS-3
12 tests/gel
10 gels/kit



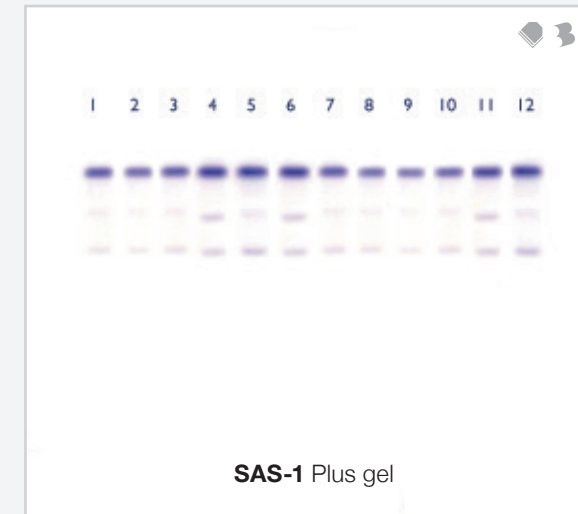
REF: 300800 • Minimum order quantities apply to this kit
20 tests/gel
10 gels/kit

CK/LD Isoenzymes

Definitive laboratory testing for documentation of Acute Myocardial Infarction (AMI) includes Creatine Kinase (CK) isoenzyme studies in conjunction with Lactate Dehydrogenase (LD) isoenzymes.

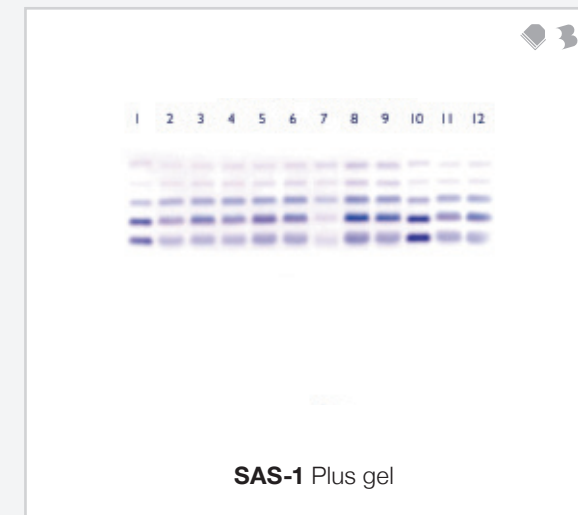
- Rapid separation of CK-MM, CK-MB and CK-BB
- Rapid separation of five LD isoenzymes
- Quantitation of LD1 and LD2; essential to documenting myocardial injury

CK Isoenzymes



REF: 201200 • Compatible with SAS-3
12 tests/gel
10 gels/kit

LD Isoenzymes



REF: 201300 • Compatible with SAS-3
12 tests/gel
10 gels/kit



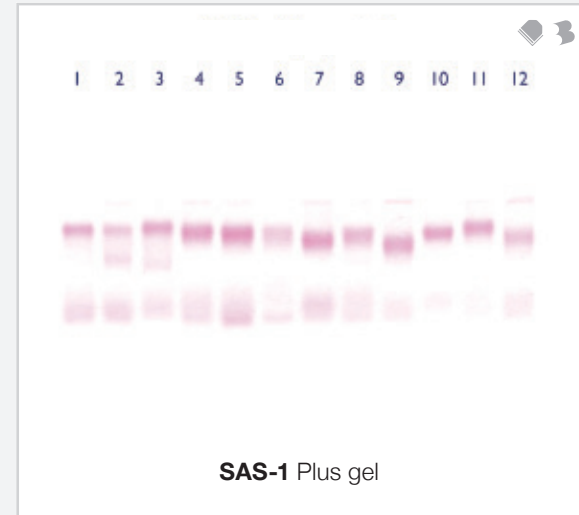
Lipoproteins

Helena Biosciences' Lipoprotein assay for the added assessment of Coronary Heart Disease has become integral to the in depth use of cardiac patient scoring systems. The Lipoprotein electrophoresis assay is an excellent method for the phenotyping of lipoproteins giving additional patient information.

- Up to 12 samples can be applied simultaneously
- Easy and accurate quantification
- Clear and identifiable bands produced



REF: 101200
10 tests/gel
10 gels/kit

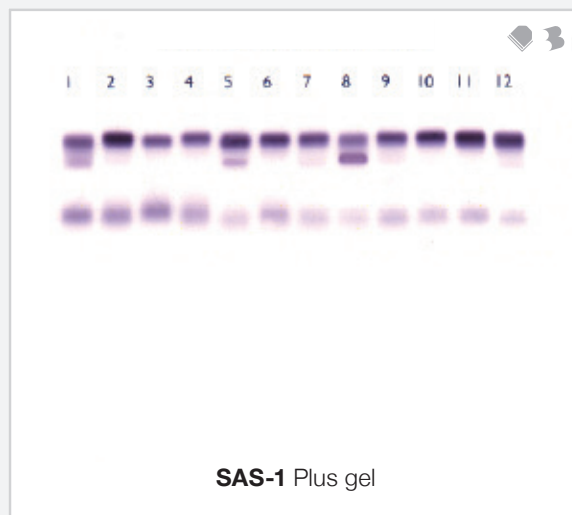


REF: 201100 • Compatible with SAS-3
12 tests/gel
10 gels/kit

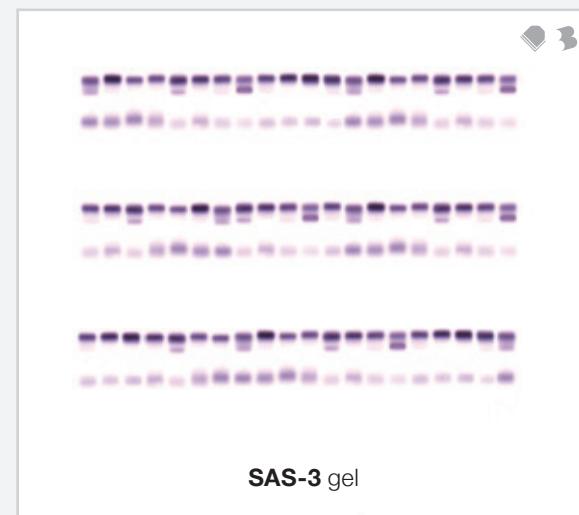
Cholesterol

Designed for the assessment of cholesterol content of the major lipoprotein fractions. The excellent separations of the various cholesterol constituents are easily conducted without the need for additional separation techniques. The cholesterol profile assay separates into HDL, vLDL, LDL and Lp(a).

- Up to 60 samples can be applied simultaneously
- Cholesterol specific staining system
- Easy and accurate quantification
- Clear and identifiable bands produced



REF: 200600 • Compatible with SAS-3
12 tests/gel • Minimum order quantities apply to this kit
10 gels/kit



REF: 300600 • Compatible with SAS-3
60 tests/gel • Minimum order quantities apply to this kit
10 gels/kit

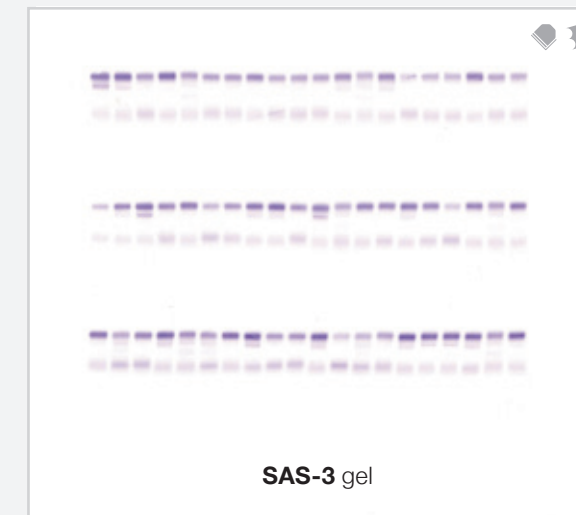
HDL Cholesterol

The HDL Cholesterol Kit complements the Lipoprotein Kit for assessment of the cholesterol content of Alpha, Beta and pre-Beta components, recognised as HDL, vLDL and LDL.

- Up to 60 samples can be applied simultaneously
- Cholesterol specific staining system
- Easy and accurate quantification
- Clear and identifiable bands produced



REF: 200500 • Compatible with SAS-3
12 tests/gel
10 gels/kit



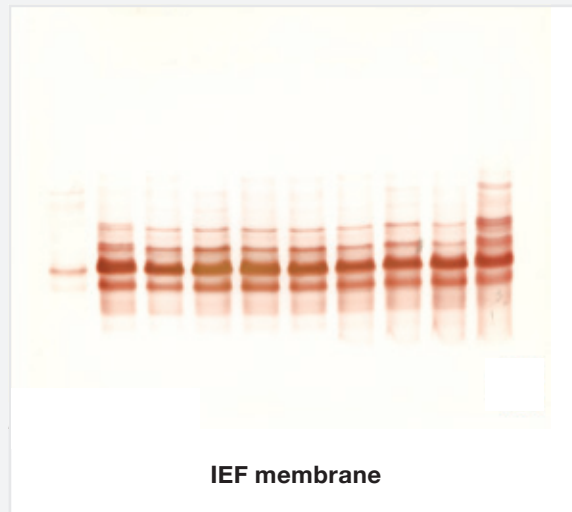
REF: 300500 • Minimum order quantities apply to this kit
60 tests/gel
10 gels/kit



Transferrin IEF

Isoelectric Focusing coupled with immunoblotting discriminates between the various isoforms of Transferrin. The method can be used for no gap qualitative analysis of serum samples to determine dysfunction in glycosylation of serum proteins found in genetic disorders/alcohol abuse.

- Up to 10 samples run per gel
- All major Transferrin isoforms clearly identified
- Applications for CSF, Transferrin Glycosylation and Tau protein
- No non-specific staining of other proteins
- All assay components within the kit
- Allows identification of Tau protein in nasal and ear fluids in the case of trauma.



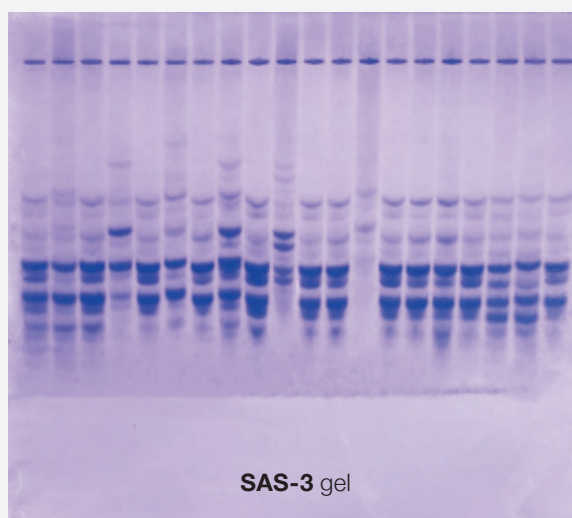
REF: 103100
10 tests/gel
10 gels/kit

• Minimum order quantities apply to this kit

Alpha-1-Antitrypsin

The SAS Alpha-1-Antitrypsin IEF Kit is intended for the identification of genetic variants in human serum by a combination of iso-electric focusing and immunofixation. The Alpha-1-Antitrypsin variants are separated according to iso-electric point in an agarose IEF gel.

- 20 samples per gel
- Clear and identifiable bands produced
- All assay components included in the kit



REF: 301000
20 tests/gel
10 gels/kit

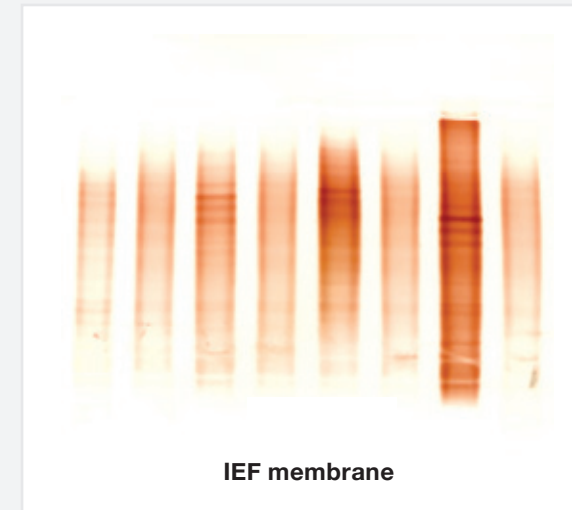
• Minimum order quantities apply to this kit



IgG IEF

The Helena Biosciences' IgG Isoelectric focusing kits are intended for the identification of IgG-specific oligoclonal banding in the diagnosis of Multiple Sclerosis. Paired serum and unconcentrated CSF samples are compared using Isoelectric Focusing coupled with immunoblotting.

- Up to 10 paired serum CSF samples per gel
- No pre-concentration of samples required
- IgG IEF control material available
- All assay components included within the kit
- Kappa and Lambda protocols available for easier interpretation of difficult samples
- The Helena Biosciences' method is acknowledged as the gold standard for this diagnosis.



REF: 102200
5 tests/gel
10 gels/kit

REF: 104200
10 tests/gel
10 gels/kit

Having dealt with Helena for 20 years now, I am obviously convinced of their excellence. The analysis of spinal fluid has been a Cinderella area due to a combination of smaller numbers of samples yet higher levels of sophistication required to detect oligoclonal IgG patterns. Helena have maintained the highest levels of quality control. This culminated in the recognition by the US Food and Drugs Administration of their kit for spinal fluid analysis. Thus the technique was further adopted by an International group of experts on the laboratory diagnosis of Multiple Sclerosis. It remains the "gold standard" in this field.

Professor E J Thompson PhD MD DSc FRCPath FRCP

Department of Neuroimmunology
Institute of Neurology
The National Hospital for Neurology and Neurosurgery

Cat No	Name	Tests/Gel	Gels/Kit	Compatibility
Serum Proteins				
100100	SAS-MX SP-10 Kit	10	10	
200100	SAS-1 SP-24 Kit	24	10	SAS-3, V8 Gel Integration
300100	SAS-3 SP-60 Kit	60	10	V8 Gel Integration
Serum Proteins (Split Beta)				
100200	SAS-MX SP-10 SB Kit	10	10	
200200	SAS-1 SP-24 SB Kit	24	10	SAS-3, V8 Gel Integration
200206	SAS-1 SP-6 SB Kit	6	10	SAS-3, V8 Gel Integration
300200	SAS-3 SP-60 SB Kit	60	10	V8 Gel Integration
Immunofixation				
100300	SAS-MX IFE-1 Kit	1	10	
100301	SAS-MX IFE-1 Kit (gel kit only)	1	10	
100400	SAS-MX IFE-2 Kit	2	10	
100401	SAS-MX IFE-2 Kit (gel kit only)	2	10	
200300	SAS-1 IFE-4 Kit	4	10	SAS-3, V8 Gel Integration
202300	SAS-1 IFE-2 Kit	2	10	SAS-3, V8 Gel Integration
202301	SAS-1 IFE-2 Kit (gel kit only)	2	10	SAS-3, V8 Gel Integration
200301	SAS-1 IFE-4 Kit (gel kit only)	4	10	SAS-3, V8 Gel Integration
300300	SAS-3 IFE-9 Kit	9	10	V8 Gel Integration
300301	SAS-3 IFE-9 Kit (gel kit only)	9	10	V8 Gel Integration
802300	Immunotyping Control	1 × 1mL		
Urine Protein				
100500	SAS-MX Urine Analysis-10 Kit	10	10	
200400	SAS-1 Urine Analysis Kit	24 (4-IFE)	10	SAS-3, V8 Gel Integration
300400	SAS-3 Urine Analysis Kit	60 (9-IFE)	10	V8 Gel Integration
Urine Immunofixation				
100600	SAS-MX Urine IFE-1 Kit	1	10	
100601	SAS-MX Urine IFE-1 Kit (gel kit only)	1	10	

Cat No	Name	Tests/Gel	Gels/Kit	Compatibility
Serum Protein (High Resolution)				
101300	SAS-MX Hi-Res Kit	7	10	
200700	SAS-1 Hi-Res-12 Kit	12	10	SAS-3
300700*	SAS-3 Hi-Res Kit	20	10	
Serum Protein Controls				
7024	Kemtrol Serum Control - Normal Kit	10 × 2mL		
7025	Kemtrol Serum Control - Abnormal Kit	10 × 2mL		
Pentavalent Screen				
200301	SAS-1 IFE-4 Kit (gel kit only)	24	10	SAS-3
200406	SAS-1 Pentavalent Screen Accessory Kit			
321200	Pentavalent Screen Antiserum	1 × 3mL		
300400	SAS-3 Urine Analysis Kit	60	10	
300406	SAS-3 Pentavalent Screen Accessory Kit			
321300	Pentavalent Screen Antiserum	10 × 3mL		
Individual Antisera				
All SAS gels				
9409	IgD Antiserum	1 × 1mL		
9410	IgE Antiserum	1 × 1mL		
SAS-MX only				
9412	Free Kappa Antiserum	1 × 1mL		
9413	Free Lambda Antiserum	1 × 1mL		
9400	Immunofixation Control	3 × 0.5mL		
SAS-1 Plus (2mL)				
220100	Urine Total Antiserum	1 × 2mL		
220200	Urine Micro Antiserum	1 × 2mL		
220300	Urine Macro Antiserum	1 × 2mL		
220400	GAM Antiserum	1 × 2mL		
220500	Free Kappa Antiserum	1 × 2mL		
220600	Free Lambda Antiserum	1 × 2mL		

* Minimum order quantity applies to this kit

Cat No	Name	Tests/Gel	Gels/Kit	Compatibility
220700	Kappa Antiserum	1 x 2mL		
220800	Lambda Antiserum	1 x 2mL		
221000	Urine Penta Antiserum	1 x 2mL		
221100	Serum Fixative	1 x 2mL		
221400	Serum Fixative 2	1 x 2mL		
SAS-3 (5mL)				
320100	Urine Total Antiserum	1 x 5mL		
320200	Urine Micro Antiserum	1 x 5mL		
320300	Urine Macro Antiserum	1 x 5mL		
320400	GAM Antiserum	1 x 5mL		
320500	Free Kappa Antiserum	1 x 5mL		
320600	Free Lambda Antiserum	1 x 5mL		
320700	Kappa Antiserum	1 x 5mL		
320800	Lambda Antiserum	1 x 5mL		
321000	Urine Penta Antiserum	1 x 5mL		
321100	Serum Fixative	1 x 5mL		
321400	Serum Fixative 2	1 x 5mL		
Haemoglobins				
Alkaline				
100800	SAS-MX Alk Hb Kit	10	10	
200900	SAS-1 Alk Hb Kit	12	10	SAS-3, V8 Gel Integration
300900	SAS-3 Alk Hb Kit	40	10	V8 Gel Integration
Acid				
100700	SAS-MX Acid Hb Kit	10	10	
201000	SAS-1 Acid Hb Kit	12	10	SAS-3, V8 Gel Integration
Controls				
5328	AA2 Hemo Control	1 x 1mL		
5329	ASA2 Hemo Control	1 x 1mL		

Cat No	Name	Tests/Gel	Gels/Kit	Compatibility
5330	AFSA2 Hemo Control	1 x 1mL		
5331	AFSC Hemo Control	1 x 1mL		
Isoenzymes				
Alkaline Phosphatase				
102000	SAS-MX Alk Phos Kit	10	10	
200800	SAS-1 Alk Phos Kit	12	10	SAS-3
300800*	SAS-3 Alk Phos Kit	20	10	
Creatine Kinase				
201200	SAS-1 CK Vis Kit	12	10	SAS-3
Lactate Dehydrogenase				
201300	SAS-1 LD Vis Kit	12	10	SAS-3
Controls				
102010	Alk Phos Control	10 x 100µL		
5134	CK/LD Control	5 x 2mL		
Lipoproteins/Cholesterol				
Lipoproteins				
101200	SAS-MX Lipo Kit	10	10	
201100	SAS-1 Lipo Kit	12	10	SAS-3
Cholesterol				
200600*	SAS-1 Cholesterol Profile Kit	12	10	SAS-3
300600*	SAS-3 Cholesterol Profile Kit	60	10	
HDL				
101000*	SAS-MX HDL-10 Kit	10	10	
200500	SAS-1 HDL-12 Kit	12	10	SAS-3
300500*	SAS-3 HDL Kit	60	10	
Controls				
5069	Lipotrol Control	5 x 1mL		
3218	Cholesterol Control	5 x 1mL		

* Minimum order quantity applies to this kit

Cat No	Name	Tests/Gel	Gels/Kit	Compatibility
Isoelectric Focusing				
IgG IEF				
102200	SAS IgG IEF Kit (1 Step)	5	10	SAS-1 Plus / SAS-3
102201	SAS IgG IEF Kit (gel kit only)	5	10	SAS-1 Plus / SAS-3
104200	SAS IgG IEF Plus Kit (1 Step)	10	10	SAS-3
104201	SAS IgG IEF Plus Kit (gel kit only)	10	10	SAS-3
Alpha-1-Antitrypsin IEF				
301000*	SAS Alpha-1-Antitrypsin IEF Kit	20	10	SAS-3
301010	Alpha-1-Antitrypsin Control Kit			
Transferrin IEF				
103100*	SAS Transferrin IEF Kit	10	10	SAS-1 Plus / SAS-3
Accessories required for IgG IEF				
5014	Development Weight			
311105	SAS Membrane Roller			
211400	Electrophoresis Staining Tray			
4061	Staining Dish			
Optional Antisera				
102206	SAS Kappa IEF Kit			
102207	SAS Lambda IEF Kit			
102208	SAS Free Kappa IEF Kit			
102209	SAS Free Lambda IEF Kit			
Control				
102210	IgG IEF Control	10 × 100µL		



* Minimum order quantity applies to this kit

Cat No	Name	Tests/Gel	Gels/Kit	Compatibility
Instrumentation				
SAS-MX				
4063	SAS-MX Gel Chamber			
EV1450	Consort Electrophoresis Power Supply 0 - 400V			
SAS-MX IEF				
4065	SAS-MX IEF Chamber			
3039	SAS-MX Chamber Cooling Device			
EV2650	Consort Electrophoresis Power Supply 0 - 600V			
SAS-1 Plus / SAS-2				
1531	SAS-1 Plus			
1212	SAS-2			
SAS-3 / SAS-4				
1527	SAS-3			
1529	SAS-4			
SAS-1 Plus Specific consumables				
210200	SAS-1 Applicators	× 10		
210300	SAS-1 Applicators	5 × 10		
SAS-3 Specific consumables				
312300	SAS Barcode Set			
310200	SAS-3 Applicators	× 10		
310300	SAS-3 Applicators	5 × 10		
General SAS-1 Plus / SAS-3 consumables				
210100	Disposable Sample Cups	× 100		
3100	REP PREP	1 × 250mL		
Required for IEF gels on SAS-3				
311200	SAS-3 Carbon Electrode Adapters for IEF			
311700	SAS-1 Gel Alignment Guide for SAS-3			

Cat No	Name	Tests/Gel	Gels/Kit	Compatibility
Required for SAS-1 Plus gels on SAS-3				
311600	SAS-1 Electrodes for SAS-3			
311700	SAS-1 Gel Alignment Guide for SAS-3			
311400	SAS-1 Sample Tray for SAS-3			
210800	SAS-1 IFE Antisera Template			
311300	SAS-1 Gel Holder for SAS-4			
312100	SAS Supplementary Destain	8 x 25g 8 x 50mL		
312200	SAS Supplementary Wash Additive	8 x 100mL		
SAS-3 Accessories				
310400	SAS-3 Carbon Electrode	x 2		
311000	SAS-3 Antisera Template	x 1		
310505	SAS-3 Reagent Spreader	x 2		
310900	SAS-3 60 Sample Tray	x 1		
310906	SAS-3 80 Sample Tray	x 1		
310907	SAS-3 100 Sample Tray	x 1		
311100	SAS-3 Gel Block Remover	x 1		
SAS-1 Plus Accessories				
210400	SAS-1 Carbon Electrode	x 2		
210500	SAS-1 Metal Electrode	x 1		
210700	SAS-1 Sample Tray	x 1		
210800	SAS-1 IFE Antisera Template	x 1		
210900	SAS-1 Gel Block Remover	x 1		

Cat No	Name	Tests/Gel	Gels/Kit	Compatibility
Software and Accessories				
Platinum 5 Software				
400500	Platinum Software Platinum 5 Standard Edition			
400501	Platinum Software Platinum 5 Touch Edition			
400502	Platinum Software Platinum 5 Plus Pack – Expert System, Networking and FlexLab connectivity			
Accessories				
400591	High-Definition LCD Touchscreen			
400592	64-bit Windows 10 PC			
400593	Transparency Scanner			
V8 NEXUS Instrumentation and Consumables				
Instrumentation				
800008	V8 V8 Nexus (220V) including Platinum 5 Standard Edition, LCD monitor and PC			
800018	V8 V8 Nexus (110V) including Platinum 5 Standard Edition, LCD monitor and PC			
Consumables				
830100	V8 Storage Buffer			
830200	V8 Maintenance Buffer			
830500	V8 Gel IFE Diluent Kit	5 x 20mL		



Cat No	Name	Quantity
Serum Protein		
800500	V8 Serum Protein SPE Kit	
800800	V8 Serum Protein 6-band Zoom Kit	
802400	CEtrol Serum Control - Normal Kit	10 x 2mL
802500	CEtrol Serum Control - Abnormal Kit	10 x 2mL
Urine Protein		
800410	V8 Urine Preparation Buffer SP6 Kit	
800411	V8 Urine Preparation Buffer SP6 Zoom Kit	
800412	V8 Urine Preparation Buffer SPE Kit	
Immunotyping		
800300	V8 Immunodisplacement Kit	
802300	Immunotyping Control	1 x 1mL
Haemoglobin UltraScreen		
801100	V8 Haemoglobin UltraScreen Kit	
802600	AA2 Normal Hemo Control	1 x 1mL
802601	AA2 Elevated Hemo Control	1 x 1mL
Haemoglobin A1c		
801000	V8 HbA1c Kit	
802700	V8 HbA1c Control Level 1	1 x 0.5mL
802800	V8 HbA1c Control Level 2	1 x 0.5mL
802900	V8 HbA1c Calibrator Kit	3 x 0.5mL
Carbohydrate Deficient Transferrin		
803110	V8 CDT Auto	
803300	V8 CDT Normal Control Kit	5 x 1mL
803400	V8 CDT Abnormal Control Kit	5 x 1mL
Glyco Liver Profile		
807001	V8 GlycoSep Kit	
807002	GlycoPrep Kit	
807003	GlycoAct Kit	

Helena Biosciences is a world-leading IVD manufacturer based in the North East of England, selling to end-users, distributors and OEM clients.

European Operations

Our global development, distribution and support operation is run from three European sites, housing our specialised R&D, manufacturing, sales and support teams.

Gateshead, UK



- Sales and marketing
- Design team
- Assay development
- Quality Assurance
- Software team
- Service and support
- Warehousing
- Logistics
- Administration

Sunderland, UK



- Research and Development
- Gel manufacture
- Reagent manufacture
- Quality Assurance
- Documentation
- Packaging
- Regulatory Affairs
- Customer support
- Warehousing and logistics

Emmen, Netherlands



- Capillary electrophoresis development specialists
- Analyser, assay and software research and development
- Multi-disciplinary engineering and manufacturing teams
- Sales, marketing and support
- Warehousing, logistics and distribution

Business Divisions

Clinical Electrophoresis	Haemostasis
<p>Automated analysers, reagents and software for protein quantitation in blood serum and urine for the monitoring of a variety of disease states.</p> <p>Automated Capillary Electrophoresis: Blood Cancers • Haemoglobinopathies Liver Diseases • Diabetes • Alcohol Abuse</p> <p>Semi-Automated Gel Electrophoresis: Kidney Disease • Multiple Sclerosis Cardiovascular Disease • Bone/Liver Disease</p>	<p>Complete portfolio of reagents for determination of blood coagulation and platelet function with support for many major brand analysers.</p> <p>Reagent Portfolio: Routine Screening Tests • Factor Assays Fibrinolysis • Thrombophilia Platelet Disorders • Controls • Calibrators</p> <p>Semi-Automated Analysers: 1/2/4 Channel Coagulometers • Aggregometers</p>

Third Party Controls
<p>A complete range of independently sourced quality controls allowing for the independent verification of a laboratory's QC régime, monitoring for any shift in analyser performance.</p>

