



PACS Scan Film

PACS Scan Film from Lexmark Healthcare lets you scan, segment and send films from any department to any PACS/EHR. It provides easy access to prior films and mammograms at the point of diagnosis.

PACS Scan Film is a software/hardware solution with a simple user interface that allows anyone to scan documents and digitize film—no prior knowledge of PACS is required.

Auto-segmentation Technology (AST) creates stacks of images from cross-sectional studies for comparison with current studies. Includes support for the DICOM Digital Mammography standard for accurate hanging protocols. In PACS, view prior films and mammograms along with CR and DR images at the point of diagnosis.

Includes additional features to scan documents, create electronic forms and import multimedia files, such as JPEG/AVI/MPEG and DICOM CDs/DVDs.

Scans. Segments. Sends. So simple.

Why PACS Scan Film

- ▶ Easy—No training required.
- ▶ Fast—Digitize and segment film in less than one minute.
- ▶ "It just works"—Send to PACS/EHR, DICOM printer or multiple destinations.

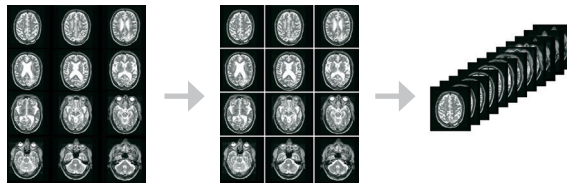


PACS Scan Film Features

- ▶ Interfaces to RIS worklist or DICOM Archive to provide automatic loading of patient demographics for ease of use. DICOM Modality Worklist (MWL) ensures an accurate match with patient studies. Includes extensive bar code support for rapid demographic entry.
- ▶ Copy and print (duplicate) film directly to a DICOM Print device for film-based workflow.
- ▶ Access to confidential patient information is protected by username and password for each user. Supports LDAP/Active Directory for single sign-on convenience. Automatic time-out feature logs off after a predetermined period of inactivity.
- ▶ Includes PACS Scan document scanning—scan and send documents to PACS/EHR using TWAIN compliant scanners.
- ▶ Send JPEGs, AVIs, MPEGs and more from files, digital cameras, USB memory sticks or flash memory.
- ▶ Imports DICOM CDs/DVDs from a wide range of PACS vendors.
- ▶ Includes lossless JPEG2000 image compression to decrease storage requirements and transmission times.

Auto-segmentation Technology (AST)

AST automatically creates "jitter free" image stacks from cross-sectional film to allow side-by-side comparison with your digital studies



PACS Scan Film Workflow

1. Insert Film
2. Query DICOM Worklist for Demographics
3. Scan Film and QC
4. Send Film to PACS

Need to export DICOM studies to CD/DVD? Add Media Writer for a complete and portable multimedia connectivity solution.

