

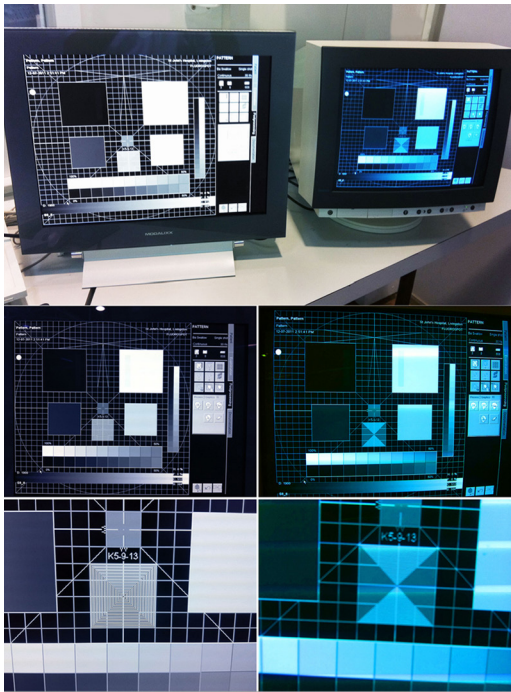


## G202MDL **MODALIXX** 2MP Grayscale Medical Display

The Modalixx G202MDL is the ultimate grayscale High Bright medical LCD solution for modality CRT monitor replacement. With the ability to autosync to any legacy grayscale or color analog modality, and the capability to up-scale to 2 mega pixel resolution.

Armed with a complete set of input options, the device is compatible with nearly all medical modality applications. Modalixx G202MDL covers Cath Lab, MRI, CT, RF rooms, CArm, and Portable X-Ray, applications.

# Why use **Modalixx** over my current system?



**Modalixx G202MDL**

**Siemens HM44**



**Philips TG21**

**Modalixx G202MDL**

## Clear. High quality. And above all else, compatible.

Modalixx upscales video to high definition, providing clear, sharp, and high brightness 2MP resolution imaging and playback.

Replacing grayscale legacy modality Medical CRT monitors to medical LCD displays has never been easier: Modalixx covers Cath Lab, MRI, CT, RF rooms, C-Arm, and Portable X-Ray applications. This coverage extends to multiple manufacturers, such as: GE, Siemens, Toshiba, Shimadzu, Philips and other modalities.

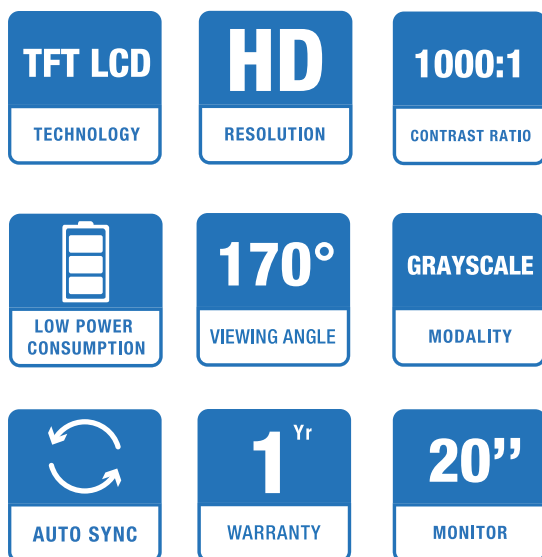
# G202 MDL

2MP Grayscale Medical Display

- Accepts any signal from 525 to 1600 lines
- 20.1" grayscale application LED Lit
- 1000 : 1 Contrast Ratio
- AutoSync modality
- Swift 25ms response time



## Compatible with the following:



## SPECIFICATIONS:

Type	Monochrome TFT LCD, LED Lit
Resolution	UXGA 1600 X 1200
Input Resolution	H: 640 - 1920; V: 525 - 1200
Screen Size	20.1"
Luminance	1200 cd/m² Max.
Contrast Ratio	1000:1
Pixel Pitch	0.255
Response Time	25ms (GTG)
Viewing Angle	170°/170° (Typical)
Video Input Connectors	DVI-D 1-5, BNC (Accepts all configurations)
Power Input Requirements	100 – 240 V, (50/60 Hz)
Power Consumption	40W (On)
Power Save Mode	<4W (Stand-by) <2W (Off)
Dimensions(W x H x D)	488.9 x 400 x 184.1mm, 19.25 x 15 3/4 x 7.25 in (W x H x D) with stand
Net Weight with Stand	10.8kg (22.8lbs)
Mounting Options	Vesa 100 x 100
Warranty	1 Year
Certifications	CE, EN 60601-1-1, EN 60601-1-2, 50581, IEC 60601-1-6, ISO 14971, ISO 13485, ISO 9001
Accessories	USA or EUR Power Cord, VGA Signal & Composite Video Cables, & User's Manual CD